

Oriental Cooking - Gas Steamer

Gas - Dim Sum Steamer/ Slim

NGDS 6-75



Due to continuous technical development, the image shown may not represent the latest design of the unit.

DESCRIPTION

Compact gas steamer with a dim sum plate with 9 holes and a two level steam kit with lid. Equipped with a high-performance burner of 28 kW power rate.

Equipped with a salt-resistant water tank with a volume of 42 liters for continuous steam. Cold-water supply with a swivel faucet to fill the tank, easy operable from the front panel.

With his compact design, the NGDS steamer is the perfect choice for any Asian restaurants with a smaller footprint.

OTHER AVAILABLE MODELS

- NEDS 6-75

MAIN FEATURES

- High-performance atmospheric burner with a power rate of 28 kW.
- Piezo ignition.
- Equipped with pilot burner, safety thermocouple, gas valve, gas knob.
- Salt-resistant, stainless steel tank of 42 liters with drain valve.
- Cold-water supply with one swivel faucet mounted on the backsplash.
- Square. two level steamer trays with lid.

CONSTRUCTION

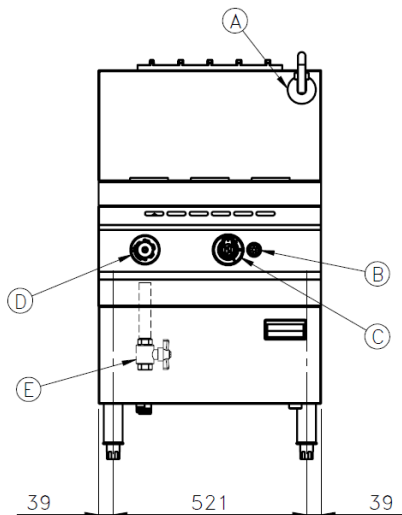
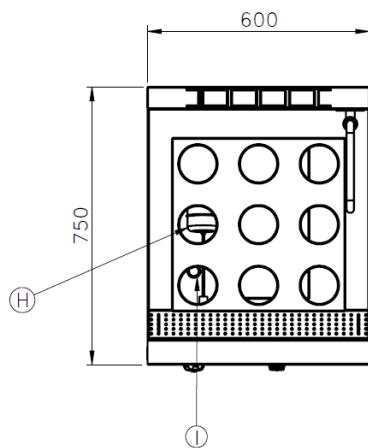
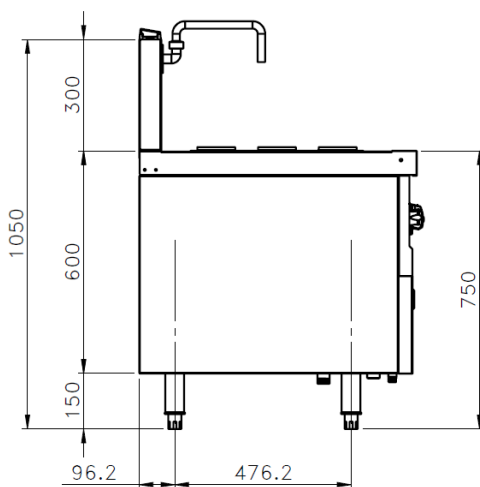
- Sturdy frame made of stainless steel AISI 430.
- Stainless steel top panel (1.2 mm), AISI 304 with orbital surface pattern.
- Front panel (1.0 mm) and side panels (0.8 mm) made of stainless steel AISI 304 with hairline surface pattern.
- Backsplash made of stainless steel AISI 304 with hairline surface pattern (1.2 mm).
- Tubular, height adjustable (± 25 mm) stainless steel legs.
- Types of installations: free standing.
- Frame, top and panels, all made of high-grade stainless steel.

INCLUDED ACCESSORIES

- N/A

OPTIONAL ACCESSORIES

- Dim sum tray kit - two levels with lid for max. 18 pcs bamboo trays \varnothing 130 mm.

FRONT**TOP****SIDE**

*Overall dimension in mm

TECHNICAL DATA**External Dimensions**

Width	: 600 mm
Depth	: 750 mm
Height	: 750/1050 mm

Cooking Surface

Cooking zones	: 42 liters, 465 x 465 mm
---------------	---------------------------

Gas Power Rating

Heat input total	: LPG/Natural Gas 28 kW
No. of burners	: 1
Control type	: High-low power control
Gas type options	: LPG G30, G31 Natural Gas G20, G25

Connections

Gas	: DN 20 (3/4")
Water	: DN15 (1/2")
Drain	: DN25 (1")

Heat & Steam Emissions

Direct heat emission	: LPG/Natural Gas 2.80 kW
Latent heat emission	: LPG/Natural Gas 8.40 kW
Steam emission	: LPG/Natural Gas 12.34 kg/h

PACKAGING DATA

Width	: 630 mm
Depth	: 780 mm
Height	: 1170 mm
Volume	: 0.57 m ³

WEIGHT

Net Weight	: 70 kg
Gross Weight	: 86 kg