

## Modular Cooking - Grandis

### Gas - Fry Top

#### NGFT 6-90 G GR



Due to continuous technical development, the image shown may not represent the latest design of the unit.

#### DESCRIPTION

Modular gas fry top with 900 mm depth and 10 kW chrome-plated tubular burners. Equipped with open cabinet.

Usable for contact grilling and starch cooking.

Made of AISI 304 with 2 mm top thickness, griddle is made of 20 mm thick AISI 420, knife steel, that prevent rust and deliver good thermal conductivity.

#### OTHER AVAILABLE MODELS

- NGFT 6-90 S GR
- NGFT 6-90 C GR
- NGFT 8-90 S GR
- NGFT 8-90 G GR
- NGFT 8-90 C GR
- NGFT 8-90 OV GR

#### MAIN FEATURES

- Powered with 10 kW chrome-plated steel tubular burner.
- Grooved griddle surface with 450 x 635 mm cooking area.
- Removable flush griddle constructed of AISI 420 with thickness of 20 mm, preventing rust.
- Obround drain with oil collection drawer included.
- Piezzo ignition system with rubber cover.
- Thermal-cut off when overheated.
- Equipped with flame failure device.

#### CONSTRUCTION

- External construction entirely with AISI 304.
- Top panel with 2 mm thickness. Orbital surface finishing: resistant toward scratches.
- Front panel is constructed of 1 mm AISI 304 with satin surface finish.
- Side panel is constructed of 0.8 mm AISI 304 with satin surface finish.
- Adjustable +/- 25 mm AISI leg.
- Cabinet executed with H2 radius.
- Connector between Grandis product on the front and the back.

#### INCLUDED ACCESSORIES

- G20 Conversion Kit
- 1/3 GN food pan for grease waste.

#### OPTIONAL ACCESSORIES

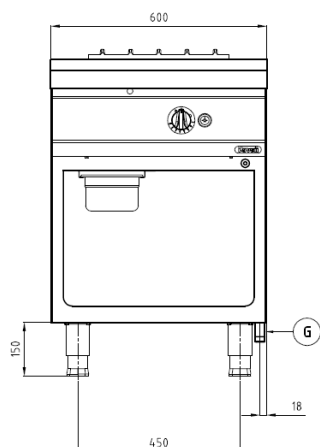
- Joint clip GR.
- Swing door 6-90 GR.

PT. NAYATI INDONESIA

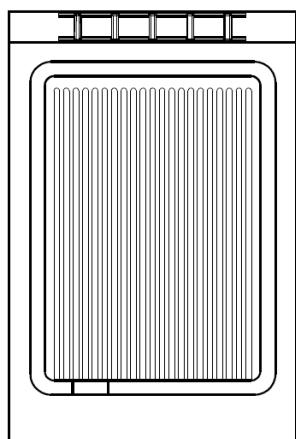
[www.nayati.com](http://www.nayati.com)

Nayati reserves the right to make product alterations and or price adjustments at any time and can not be held responsible for any printing errors or omissions.

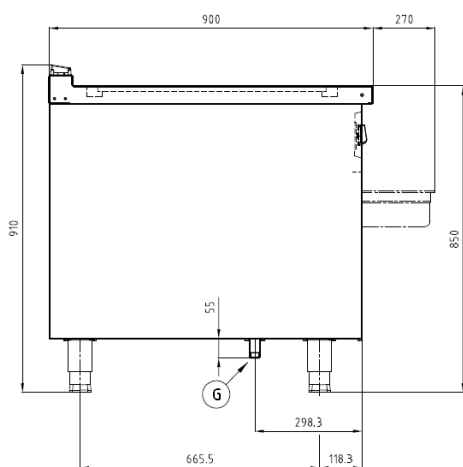
## FRONT



## TOP



## SIDE



\*Overall dimension in mm

## TECHNICAL DATA

### External Dimensions

Width	: 600 mm
Depth	: 900 mm
Height	: 850/910 mm

### Cooking Surface

Cooking zones	: 450 x 635 mm
---------------	----------------

### Gas Power Rating

Heat input total	: LPG/Natural Gas 10 kW
No. of burners	: 1
Control type	: Modulating power control
Gas type options	: LPG G30, G31 Natural Gas G20, G25

### Connections

Gas	: DN 20 (3/4")
Water	: N/A
Drain	: N/A

### Heat & Steam Emissions

Direct heat emission	: 3.50 kW
Latent heat emission	: 4.00 kW
Steam emission	: 5.88 kg/h

### PACKAGING DATA

Width	: 630 mm
Depth	: 930 mm
Height	: 1030 mm
Volume	: 0.60 m <sup>3</sup>

### WEIGHT

Net Weight	: 101 kg
Gross Weight	: 123 kg

PT. NAYATI INDONESIA

[www.nayati.com](http://www.nayati.com)

Nayati reserves the right to make product alterations and or price adjustments at any time and can not be held responsible for any printing errors or omissions.

22/03/2022