

Modular Cooking - Grandis

Gas - Fry Top

NGFT 8-90 C GR



Due to continuous technical development, the image shown may not represent the latest design of the unit.

DESCRIPTION

Modular gas fry top with 900 mm depth and 16 kW chrome-plated tubular burners. Equipped with open cabinet.

Usable for contact grilling and starch cooking.

Made of AISI 304 with 2 mm top thickness, griddle is made of 20 mm thick AISI 420, knife steel, that prevent rust and deliver good thermal conductivity.

OTHER AVAILABLE MODELS

- NGFT 6-90 S GR
- NGFT 6-90 G GR
- NGFT 6-90 C GR
- NGFT 8-90 S GR
- NGFT 8-90 G GR
- NGFT 8-90 OV GR

MAIN FEATURES

- Powered with 16 kW chrome-plated steel tubular burner.
- Half grooved griddle surface with 650 x 635 mm cooking area.
- Removable flush griddle constructed of AISI 420 with thickness of 20 mm, preventing rust.
- Obround drain with oil collection drawer included.
- Piezzo ignition system with rubber cover.
- Thermal-cut off when overheated.
- Equipped with flame failure device.

CONSTRUCTION

- External construction entirely with AISI 304.
- Top panel with 2 mm thickness. Orbital surface finishing: resistant toward scratches.
- Front panel is constructed of 1 mm AISI 304 with satin surface finish.
- Side panel is constructed of 0.8 mm AISI 304 with satin surface finish.
- Adjustable +/- 25 mm AISI leg.
- Cabinet executed with H2 radius.
- Connector between Grandis product on the front and the back.

INCLUDED ACCESSORIES

- G20 Conversion Kit
- 1/3 GN food pan for grease waste.

OPTIONAL ACCESSORIES

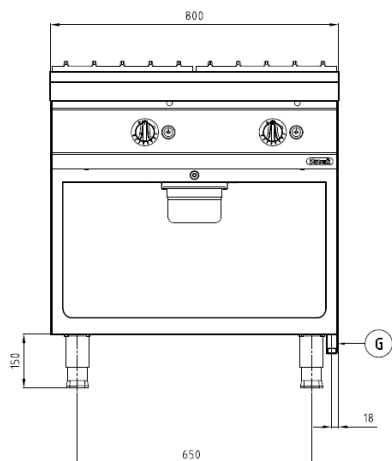
- Joint clip GR.
- Swing door 8-90 GR.

PT. NAYATI INDONESIA

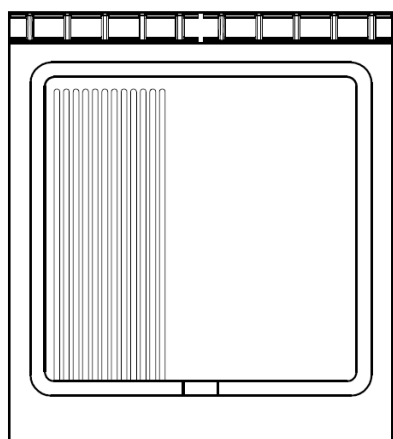
www.nayati.com

Nayati reserves the right to make product alterations and or price adjustments at any time and can not be held responsible for any printing errors or omissions.

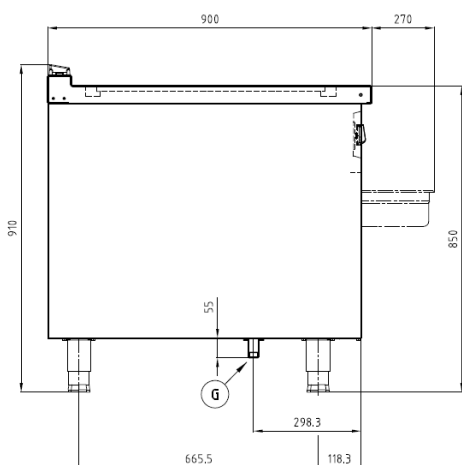
FRONT



TOP



SIDE



*Overall dimension in mm

TECHNICAL DATA

External Dimensions

Width	: 800 mm
Depth	: 900 mm
Height	: 850/910 mm

Cooking Surface

Cooking zones	: 650 x 635 mm
---------------	----------------

Gas Power Rating

Heat input total	: LPG/Natural Gas 16 kW
No. of burners	: 2
Control type	: Modulating power control
Gas type options	: LPG G30, G31 Natural Gas G20, G25

Connections

Gas	: DN 20 (3/4")
Water	: N/A
Drain	: N/A

Heat & Steam Emissions

Direct heat emission	: 5.60 kW
Latent heat emission	: 6.40 kW
Steam emission	: 9.41 kg/h

PACKAGING DATA

Width	: 830 mm
Depth	: 930 mm
Height	: 1030 mm
Volume	: 0.80 m ³

WEIGHT

Net Weight	: 136 kg
Gross Weight	: 155 kg

PT. NAYATI INDONESIA

www.nayati.com

Nayati reserves the right to make product alterations and or price adjustments at any time and can not be held responsible for any printing errors or omissions.

22/03/2022