

**Washing - Dishwasher**  
**Undercounter Dishwasher**  
**NDWE 20**



Due to continuous technical development, the image shown may not represent the latest design of the unit.

#### DESCRIPTION

Undercounter glass washer with capacity of 30 racks per hour. Powered with 3.6 kW boiler heating element.

Suitable for bar, front and visible kitchen area.

Includes rinsing, washing, drain, and two detergent dispensing pumps for all-in-one dishwashing solution. Controlled with programmable interface that also regulates consumption of water and detergent.

#### INCLUDED ACCESSORIES

- Base Rack 400 x 400 (R400) - PD.DWE56.
- Plate Insert for 400 x 400 (PI 400) - PD. DWE56.
- Glass Insert 400 x 400 (GR 400) - PD.DWE57.
- Water inlet hose 3/4" - PD.DWD45, Drain hose 1 1/4" - PD.DWC48.
- Power cable, H07RN-F (3 x 2.5 mm) p/mtr.

#### OPTIONAL ACCESSORIES

- N/A.

#### MAIN FEATURES

- Atmospheric boiler heating system. Incoming water to the tank is already pre-heated by the built-in boiler. Ensuring superior and faster cleaning results.
- Soft start washing for delicate glasses.
- Fully controlled electronically.
- Water consumption of 1.8 liter per cycle, assuming water inlet is 2-4 bar, with 50-100 ppm CaCO<sub>3</sub> hardness.
- Washing capacity of 30 racks/hour, rack size of 400 x 400 mm.
- Touch screen panel.
- Fully automatic self-cleaning tank.
- Three default washing options: Light/Medium/Heavy Soil
- IPX5 water protection.
- Easily removable and cleanable washing and rinsing arms.
- Built-in rinse and detergent pumps.

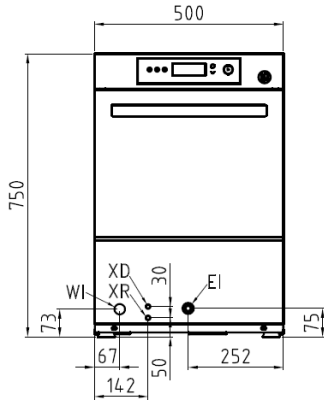
#### CONSTRUCTION

- Interior and exterior panel made entirely of stainless steel AISI 304.
- Washing arm and rinse arm made entirely of stainless steel AISI 304.
- Door handle constructed from robust square stainless steel pipe.
- Hinged door design with low-opening mechanism.

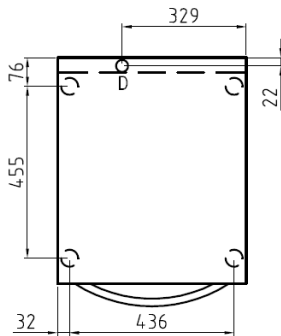
#### OTHER AVAILABLE MODELS

- NDWE 30/1P
- NDWE 30/3P

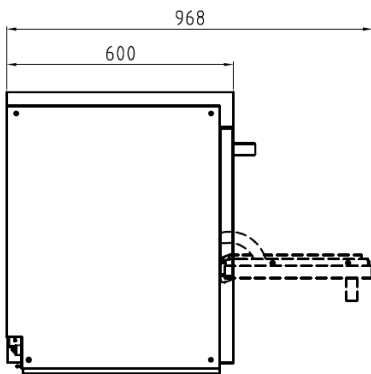
**FRONT**



**TOP**



**SIDE**



\*Overall dimension in mm

**TECHNICAL DATA**

**External Dimensions**

Width : 500 mm  
 Depth : 750 mm  
 Height : 730 mm

**Operating Parameters**

Basket type : 400 x 400 mm baskets.  
 Capacity : Tank: 8 liters, Boiler: 5 liters.  
 Temperature : Tank: 55 C - 60 C, Boiler: 85 C - 90 C  
 Heating zones : Boiler: 3.6 kW, Tank: 2.2 kW.  
 Control type : Smart touch screen programmable time, temperature, and dosage control.

**Electrical Supply Data**

Total connected load : 3.6 kW  
 Voltage : 230V, 1NPE AC / 50-60 Hz  
 Recommended fuse : 20 A (slow)

**Connections**

Water : DN 20 (3/4")  
 Drain : DN 32 (1 1/4")

**Heat & Steam Emissions**

Direct heat emission : 4.1 kW  
 Latent heat emission : 2.87 kW  
 Steam emission : 4.1 kg/h

**PACKAGING DATA**

Width : 560 mm  
 Depth : 710 mm  
 Height : 910 mm  
 Volume : 0.36 m<sup>3</sup>

**WEIGHT**

Net Weight : 65 kg  
 Gross Weight : 73 kg