

Modular Cooking - Amicus

Electric - Refrigerated Cold Base

NSWT 4M / CB 2C AM



Due to continuous technical development, the image shown may not represent the latest design of the unit.

DESCRIPTION

Cabinet counter chiller with two swing doors and 1600 mm length.

Usable for storage of ingredients.

OTHER AVAILABLE MODELS

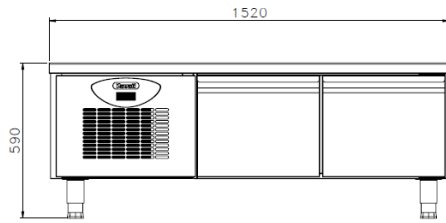
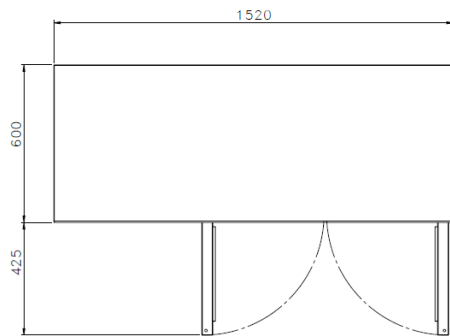
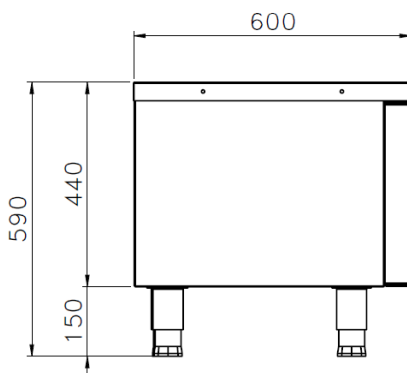
- NSWT 4M / CB 4D AM
- NSWT 4M / CC AM

MAIN FEATURES

- Designed as a cabinet underneath Amicus Modular Cooking series with 60 cm depth.
- Equipped with 2 swing doors with opening of 2 x 375 x 294 mm.
- Chiller counter cabinet with temperature regulation of 2 to 5 degree Celcius.
- Self-closing swing doors.

CONSTRUCTION

- External construction entirely with AISI 304.
- Adjustable +/- 25 mm AISI leg.
- Insulated with non-HCFC polyurethane.
- Polyurethane density is 40 kg per meters cube.

FRONT**TOP****SIDE**

*Overall dimension in mm

TECHNICAL DATA**External Dimensions**

Width	: 1520 mm
Depth	: 600 mm
Height	: 630 mm

Internal Dimensions

Width	: 850 mm
Depth	: 440 mm
Height	: 340 mm
Volume	: N/A

Refrigeration Properties

Refrigerant	: R404a
Temperature	: 2 C ... 5 C
Control type	: Temperature control & configuration

Electrical Supply Data

Energy consumption	: 6.8 kW/ 24 hours
Voltage	: 230V, 1NPE AC / 50-60 Hz
Recommended fuse	: 6 A (slow)
Starting current	: N/A A
Running current	: N/A A

Heat Emissions

Direct heat emission	: 0.19 kW
----------------------	-----------

PACKAGING DATA

Width	: 1550 mm
Depth	: 630 mm
Height	: 750 mm
Volume	: 0.73 m ³

WEIGHT

Net Weight	: 72 kg
Gross Weight	: 98 kg

INCLUDED ACCESSORIES

- Power cable, H07RN-F (3x 2.5 mm).
- Nylon-coated wire racks (2 pcs.).

OPTIONAL ACCESSORIES

- N/A

PT. NAYATI INDONESIAwww.nayati.com

Nayati reserves the right to make product alterations and or price adjustments at any time and can not be held responsible for any printing errors or omissions.

09/05/2020