

Modular Cooking - Grandis

Electric - Bain Marie

NEBM 6-90 GR



Due to continuous technical development, the image shown may not represent the latest design of the unit.

DESCRIPTION

Modular electric bain marie with 900 mm depth and 1 x 1/1 GN capacity with 6 liters of water bath, heated with single 1.8 kW round heater. Equipped with swing door.

Usable for food warming before food distribution.

Made of AISI 304 with 2 mm top thickness, temperature controlled, fully welded basin with 1 x 1/1 GN capacity, round heater is capable in delivering high temperature with consistent result.

OTHER AVAILABLE MODELS

- NEBM 8-90 GR

MAIN FEATURES

- Powered with 1.8 kW plate heater.
- Basin is made of AISI 304 with depth of 210 mm.
- Usable water bath volume of 6 liters, equipped with overflow pipe.
- Manual water filling system with knob integrated on the front panel.
- Temperature control from 40 degree Celcius to 80 degree Celcius.

CONSTRUCTION

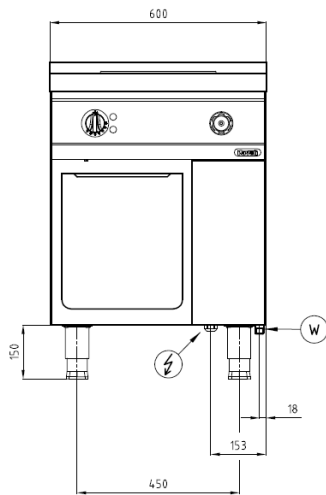
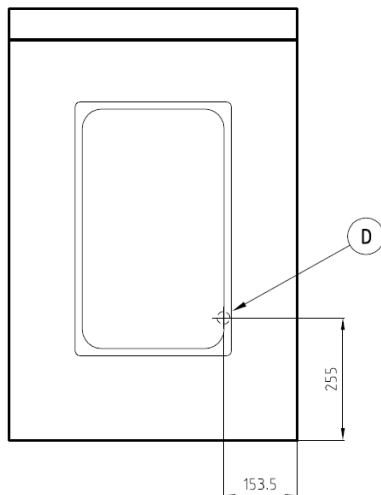
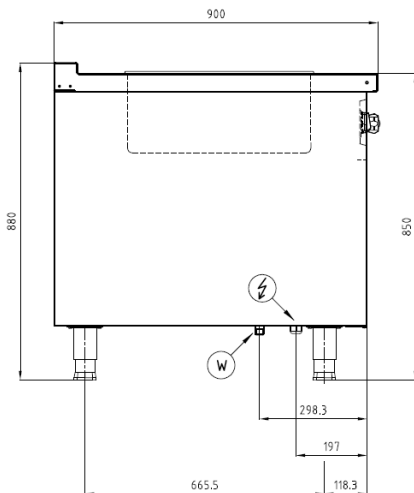
- External construction entirely with AISI 304.
- Top panel with 2 mm thickness. Orbital surface finishing: resistant toward scratches.
- Front panel is constructed of 1 mm AISI 304 with satin surface finish.
- Side panel is constructed of 0.8 mm AISI 304 with satin surface finish.
- Adjustable +/- 25 mm AISI leg.
- Cabinet executed with H2 radius.
- Connector between Grandis product on the front and the back.
- IPX4 water protection level.

INCLUDED ACCESSORIES

- Swing door.

OPTIONAL ACCESSORIES

- Joint clip GR.
- Power cable, H07RN-F (5 x 2.5 mm) p/mtr.
- Various GN Pan configuration
- Swing door 6-90 GR.

FRONT**TOP****SIDE**

*Overall dimension in mm

TECHNICAL DATA**External Dimensions**

Width	: 600 mm
Depth	: 900 mm
Height	: 850/880 mm

Cooking Surface

Cooking zones	: GN 1/1, 310 x 510 mm
Heating zones	: 1
Control type	: Modulating temperature control

Electrical Supply Data

Total connected load	: 1.8 kW
Voltage	: 230V, 1NPE AC / 50-60 Hz
Recommended fuse	: 10 A (slow)

Connections

Water	: DN 15 (1/2")
Drain	: DN 20 (3/4")

Heat & Steam Emissions

Direct heat emission	: 0.23 kW
Latent heat emission	: 0.36 kW
Steam emission	: 0.53 kg/h

PACKAGING DATA

Width	: 630 mm
Depth	: 930 mm
Height	: 1000 mm
Volume	: 0.59 m ³

WEIGHT

Net Weight	: 55 kg
Gross Weight	: 68 kg