

**Modular Cooking - Tilting Pan**  
**Electric - Indirect Boiling Pan**  
**NEBP 300 TC TA IND**



Due to continuous technical development, the image shown may not represent the latest design of the unit.

## DESCRIPTION

Modular indirect electric tilting boiling pan with 1100 mm depth, and 300 liters capacity powered with 36 kW incoloy heaters.

Usable for cooking liquid food, vegetable, starch meal, sauces soups, or acidic dishes.

Made of AISI 304 with 2 mm top thickness, boiling kettle is made of 2 mm thick AISI 316 bottom and 2 mm thick AISI 304 sleeve. Indirectly heated to improve temperature distribution during boiling and prolong lifetime of the kettle.

## OTHER AVAILABLE MODELS

- NEBP 100 TC TA IND
- NEBP 150 TC TA IND

## MAIN FEATURES

- Powered with 4 x 9 kW incoloy heaters.
- Indirectly heated with 300 liters capacity.
- Distilled water is automatically filled through the inlet inside the right column.
- Designed with left and right column with unifying frame that connects the frame and the pan.
- Motorized tilting for ease of operation. Operating at low speed for stable transfer of food to the pan.
- Drain tap outflow made of AISI 304 with 2" diameter and red-colored indicator when opened.
- Front panel includes manometer. Pressure in the kettle jacket is operating below 0.55 bar.
- Lid is opened and closed through heavy-duty mechanical hinge.
- Touch screen interface to adjust energy level, temperature and time.

## CONSTRUCTION

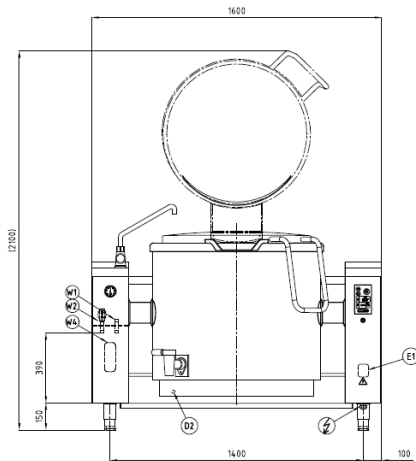
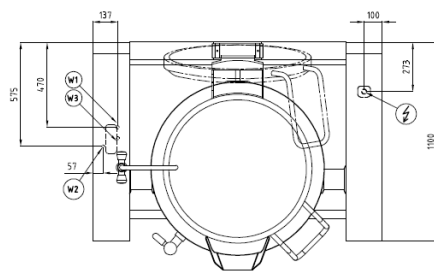
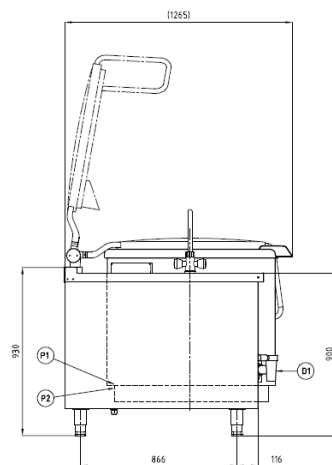
- External construction entirely with AISI 304.
- Top panel with 2 mm thickness. Orbital surface finishing; resistant toward scratches.
- Front panel is constructed of 1 mm AISI 304 with satin surface finish.
- Side panel is constructed of 0.8 mm AISI 304 with satin surface finish.
- Adjustable +/- 25 mm AISI leg.
- IPX5 water protection level.

## INCLUDED ACCESSORIES

- N/A

## OPTIONAL ACCESSORIES

- Power cable, H07RN-F (5 x 16 mm) p/mtr.
- Plinth base.
- Unifying column set between two units.
- Volume measuring stick

**FRONT****TOP****SIDE**

\*Overall dimension in mm

**TECHNICAL DATA****External Dimensions**

Width	: 1600 mm
Depth	: 1100 mm
Height	: 900/930 mm

**Cooking Surface**

Cooking zones	: 300 liters, Ø 780 mm
Heating zones	: 1
Control type	: Temperature, energy and time control

**Electrical Supply Data**

Total connected load	: 36 kW
Voltage	: 400V, 3NPE AC /50-60Hz
Recommended fuse	: 60 A (slow)

**Connections**

Water	: DN 15 (1/2")
Drain	: DN 40 (1 1/2")

**Heat & Steam Emissions**

Direct heat emission	: 1.26 kW
Latent heat emission	: 7.2 kW
Steam emission	: 10.58 kg/h

**PACKAGING DATA**

Width	: 1630 mm
Depth	: 1130 mm
Height	: 1050 mm
Volume	: 1.93 m <sup>3</sup>

**WEIGHT**

Net Weight	: 469 kg
Gross Weight	: 583 kg