

Modular Cooking - Meritus

Electric - Noodle Cooker

NEN 26 (ME)



Due to continuous technical development, the image shown may not represent the latest design of the unit.

DESCRIPTION

Modular electric noodle cooker with 750 mm depth, equipped with high-efficient heaters of a total connected load of 13.8 kW.

Two, individually temperature-controlled tanks, made of salt-resistant stainless steel. Each tank with a faucet for tank filling, easy operable from the front panel. Designed for continuous and high-speed cooking of noodles, the perfect choice for any Asian restaurants.

Made of AISI 304 with 1.5 mm top thickness, temperature controlled, noodle tank is welded.

OTHER AVAILABLE MODELS

- NEN 26 AL (ME)

MAIN FEATURES

- Powered with 6 x 2.3 kW butterfly-shaped rod heating element².
- Two salt-resistant, stainless steel tanks of 20 liters each with drain valves.
- Usable for six noodle baskets.
- Manual water filling system with knob integrated on the front panel.
- Thermal-cut off when overheated.
- Three level rotary switches with control knobs and function indication lights.

CONSTRUCTION

- External construction entirely with AISI 304.
- Top panel with 1.5 mm thickness. Orbital surface finishing: resistant toward scratches.
- Front panel is constructed of 0.8 mm AISI 304 with satin surface finish.
- Side panel is constructed of 0.8 mm AISI 304 with satin surface finish.
- Adjustable +/- 25 mm AISI leg.
- Nayati connection system between Meritus products on the front panels, cabinets, and splashbacks.
- Cabinet executed with H2 radius.
- Deep drawn front panel to minimize liquid penetration to the internal part.
- Gasket protection behind the knobs to prevent water to seeping in, prolonging main heating regulation parts.
- IPX5 water protection level.

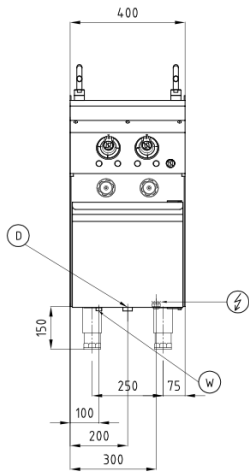
INCLUDED ACCESSORIES

- Noodle basket (6 pcs.).
- Swing door.
- Basket holders (6 pcs.).
- Drain filter and splash guards.

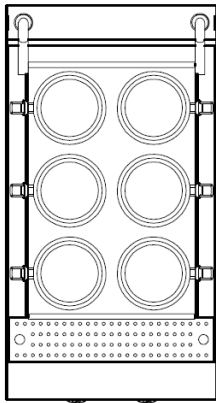
OPTIONAL ACCESSORIES

- Power cable, H07RN-F (5 x 4 mm) p/mtr.
- Joint clip ME.

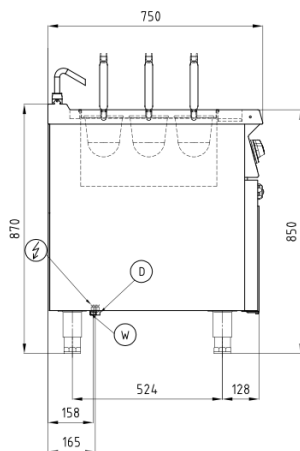
FRONT



TOP



SIDE



*Overall dimension in mm

TECHNICAL DATA

External Dimensions

Width : 400 mm
 Depth : 750 mm
 Height : 850/990 mm

Cooking Surface

Cooking zones : 2 x 20 liters, 320 x 475 mm
 Heating zones : 2
 Control type : Modulating temperature control

Electrical Supply Data

Total connected load : 13.8 kW
 Voltage : 400V, 3NPE AC /50-60Hz
 Recommended fuse : 25 A (slow)

Connections

Water : DN 15 (1/2")
 Drain : DN 25 (1")

Heat & Steam Emissions

Direct heat emission : 1.73 kW
 Latent heat emission : 2.76 kW
 Steam emission : 4.06 kg/h

PACKAGING DATA

Width : 430 mm
 Depth : 780 mm
 Height : 990 mm
 Volume : 0.33 m³

WEIGHT

Net Weight : 53 kg
 Gross Weight : 67 kg