

## Modular Cooking - Meritus

### Electric - Noodle Cooker

#### NEN 26 AL (ME)



Due to continuous technical development, the image shown may not represent the latest design of the unit.

#### DESCRIPTION

Modular electric noodle cooker with 750 mm depth, equipped with high-efficient heaters of a total connected load of 13.8 kW. Equipped with auto-lifting modul to control 6 basket individualy.

Two, individually temperature-controlled tanks, made of salt-resistant stainless steel. Each tank with a faucet for tank filling, easy operable from the front panel. Designed for continuous and high-speed cooking of noodles, the perfect choice for any Asian restaurants.

Made of AISI 304 with 1.5 mm top thickness, temperature controlled, noodle tank is welded.

#### OTHER AVAILABLE MODELS

- NEN 26 (ME)

#### MAIN FEATURES

- Powered with 6 x 2.3 kW butterfly-shaped rod heating element.
- Two salt-resistant, stainless steel tanks of 20 liters each with drain valves.
- Usable for six noodle baskets with auto-lifting features.
- Six individual timer, one for each baskets. Resettable through two button simultaneous push.
- Manual water filling system with knob integrated on the front panel.
- Thermal-cut off when overheated.
- Three level rotary switches with control knobs and function indication lights.

#### CONSTRUCTION

- External construction entirely with AISI 304.
- Top panel with 1.5 mm thickness. Orbital surface finishing: resistant toward scratches.
- Front panel is constructed of 0.8 mm AISI 304 with satin surface finish.
- Side panel is constructed of 0.8 mm AISI 304 with satin surface finish.
- Adjustable +/- 25 mm AISI leg.
- Nayati connection system between Meritus products on the front panels, cabinets, and splashbacks.
- Cabinet executed with H2 radius.
- Deep drawn front panel to minimize liquid penetration to the internal part.
- Gasket protection behind the knobs to prevent water to seeping in, prolonging main heating regulation parts.
- IPX5 water protection level.

#### INCLUDED ACCESSORIES

- Noodle basket (6 pcs.).
- Basket holders (6 pcs.).
- Auto-lifting kit.
- Swing door.
- Drain filter and splash guards.

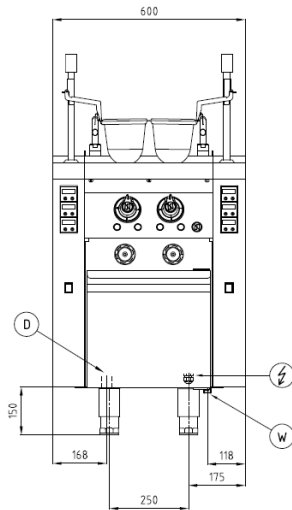
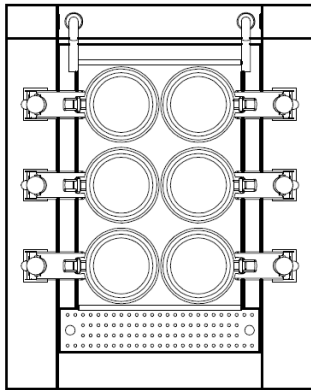
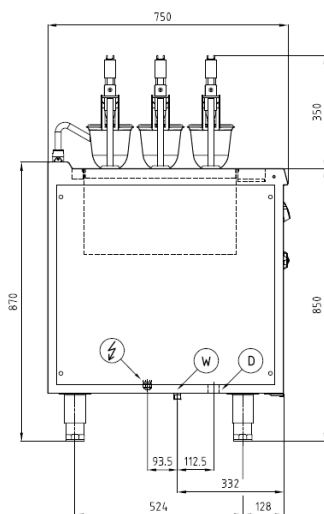
#### OPTIONAL ACCESSORIES

- Power cable, H07RN-F (5 x 4 mm) p/mtr.
- Joint clip ME.

PT. NAYATI INDONESIA

[www.nayati.com](http://www.nayati.com)

Nayati reserves the right to make product alterations and or price adjustments at any time and can not be held responsible for any printing errors or omissions.

**FRONT****TOP****SIDE**

\*Overall dimension in mm

**TECHNICAL DATA****External Dimensions**

Width	: 600 mm
Depth	: 750 mm
Height	: 850/1200 mm

**Cooking Surface**

Cooking zones	: 2 x 20 liters, 320 x 475 mm
Heating zones	: 2
Control type	: Modulating temperature control, autolifter: individual timers with reset functionality.

**Electrical Supply Data**

Total connected load	: 13.84 kW
Voltage	: 400V, 3NPE AC /50-60Hz
Recommended fuse	: 25 A (slow)

**Connections**

Water	: DN 15 (1/2")
Drain	: DN 25 (1")

**Heat & Steam Emissions**

Direct heat emission	: 1.73 kW
Latent heat emission	: 2.76 kW
Steam emission	: 4.06 kg/h

**PACKAGING DATA**

Width	: 630 mm
Depth	: 780 mm
Height	: 990 mm
Volume	: 0.49 m <sup>3</sup>

**WEIGHT**

Net Weight	: 81 kg
Gross Weight	: 102 kg