

Smart Oven - Pizza Oven

Electric - Pizza Oven

NEPO 80.70-S



Due to continuous technical development, the image shown may not represent the latest design of the unit.

DESCRIPTION

Electric Pizza Oven with the chamber size of 82 x 72 cm. Powered with two heating elements with total power rate of 6.9 kW.

Usable for four pizzas with 30 cm diameter or a single pizza with 45 cm diameter.

Temperature of upper and lower chamber is controlled separately through digital controller. Equipped with timer indicator. Maximum working temperature of 400 degree Celcius. Equipped with oven lamp for visualization. Can be mounted above cabinet NBSO 80.70.

OTHER AVAILABLE MODELS

- NEPO 50.50-S
- NEPO 105.65-S

MAIN FEATURES

- Heated with maximum temperature of 400 degree Celcius.
- Includes halogen lighting inside the chamber for visualization.
- Lower opening oven door with stainless steel cylindrical handle bar.
- Base of the chamber is made of durable refractory stone.
- Individual temperature control function, each for upper and lower chamber.
- Equipped with safety thermostat to prevent overheating.
- Includes digital timer indicator.
- Possibility to stack with dedicated stand.
- Possibility to configure double-deck pizza oven.

CONSTRUCTION

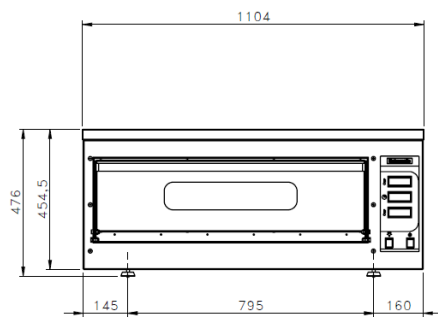
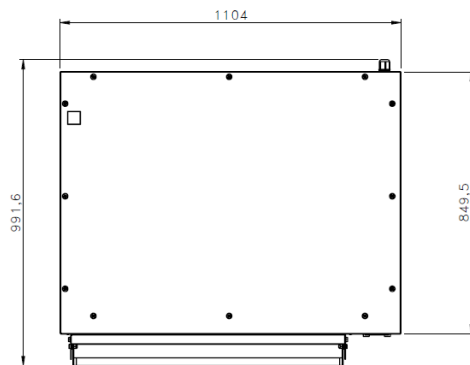
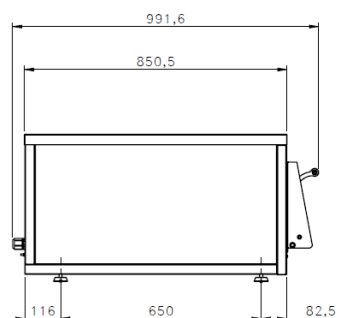
- Exterior panel constructed from stainless steel 304.
- Tempered glass door made of double layer to insulate heat inside the chamber.
- Round bar stainless steel door handle.

INCLUDED ACCESSORIES

- Power cable.

OPTIONAL ACCESSORIES

- NBSO 80.70

FRONT**TOP****SIDE**

*Overall dimension in mm

TECHNICAL DATA**External Dimensions**

Width	: 1104 mm
Depth	: 992 mm
Height	: 476 mm

Cooking Surface

Cooking zones	: 820 x 720 x 178.5 mm
Heating zones	: 2 x 3.45 kW
Control type	: Temperature control

Electrical Supply Data

Total connected load	: 6.9 kW
Voltage	: 400V, 3NPE AC /50-60Hz
Recommended fuse	: 10 A (slow)

Connections

Water	: N/A
Drain	: N/A

Heat & Steam Emissions

Direct heat emission	: 2.45 kW
Latent heat emission	: 1.11 kW
Steam emission	: 1.56 kg/h

PACKAGING DATA

Width	: 1162 mm
Depth	: 1050 mm
Height	: 624 mm
Volume	: 0.76 m ³

WEIGHT

Net Weight	: 85 kg
Gross Weight	: 113 kg