

Oriental Cooking - Pot Cooker

Induction - Pot Cooker

NETL 7-75



Due to continuous technical development, the image shown may not represent the latest design of the unit.

DESCRIPTION

Induction pot cooker with one glass-ceramic hob. Powered with one, high-efficient and energy saving induction coil with 15 kW connected load.

Compact design with a depth of 750 mm and height adjustable legs.

Designed for durability to cater medium volume of boiling and simmering, this induction stock pot cooker is the perfect solution for every kitchen where gas appliances are restricted.

OTHER AVAILABLE MODELS

- N/A

MAIN FEATURES

- Impact-resistant glass-ceramic hob with Ø 470 mm.
- High-efficient, energy-saving induction coil with 15 kW connected load.
- Five level power adjustment with power selection sliders.
- LED display to indicate the selected power level and the operation modes.
- CE certified unit.

CONSTRUCTION

- Sturdy frame made of stainless steel AISI 430.
- Stainless steel top panel (1.2 mm), AISI 304 with orbital surface pattern.
- Front and side panels made of stainless steel AISI 304 with hairline surface pattern (1.0 mm).
- Backsplash made of stainless steel AISI 304 with hairline surface pattern (1.0 mm).
- Tubular, height adjustable (± 25 mm) stainless steel legs.
- Type of installation: free standing.
- Frame, top, panels and legs all made of high-grade stainless steel.

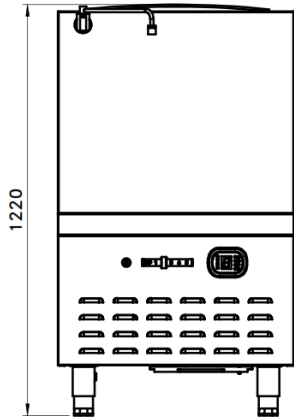
INCLUDED ACCESSORIES

- N/A

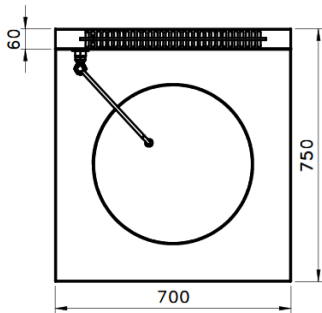
OPTIONAL ACCESSORIES

- Power cable type: H07RN-F (5 x 4 mm²).

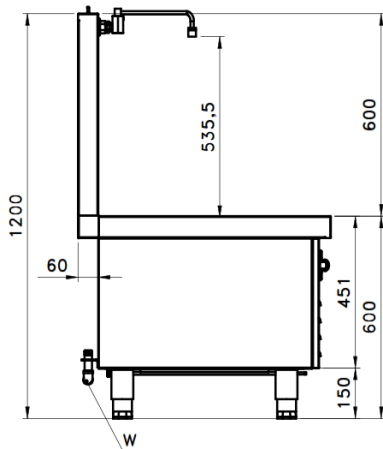
FRONT



TOP



SIDE



TECHNICAL DATA

External Dimensions

Width : 700 mm
 Depth : 750 mm
 Height : 600/1200 mm

Cooking Surface

Cooking zones : Ø 470 mm
 Heating zones : 1 x 15 kW
 Control type : Modulating power control

Electrical Supply Data

Total connected load : 15 kW
 Voltage : 400V, 3NPE AC /50-60Hz
 Recommended fuse : 25 A (slow)

Connections

Water : N/A
 Drain : N/A

Heat & Steam Emissions

Direct heat emission : 3.00 kW
 Latent heat emission : 2.25 kW
 Steam emission : 3.30 kg/h

PACKAGING DATA

Width : 730 mm
 Depth : 780 mm
 Height : 1300 mm
 Volume : 0.74 m³

WEIGHT

Net Weight : 68 kg
 Gross Weight : 79 kg

*Overall dimension in mm

PT. NAYATI INDONESIA

www.nayati.com

Nayati reserves the right to make product alterations and or price adjustments at any time and can not be held responsible for any printing errors or omissions.

18/01/2022