

Asian Cooking - Teppanyaki Griddle
Electric - Teppanyaki NETY - mobile
NETY 10-60 Mobile



Due to continuous technical development, the image shown may not represent the latest design of the unit.

DESCRIPTION

Electric, mobile Teppanyaki griddle station with uniform heating and accurate temperature control for superior hibachi-style cooking.

Two individually controlled heating zones, energized by Nayati SSS® die cast aluminium heating elements with a total of 3.3 kW connected load to ensure a stable and unfluctuating heating performance.

The griddle is made of 16 mm thick, stainless steel AISI 420. The working/ preparation space next to the griddle, a drawer and a knife & bottle holder makes this unit the perfect mobile cooking unit for every occasion.

OTHER AVAILABLE MODELS

- N/A

MAIN FEATURES

- High-efficient Nayati SSS® die cast aluminium heating elements with a total connected load of 3.3 kW.
- Thermostats with control knobs and function indication lights.
- Griddle plate, made of 16 mm stainless steel AISI 420 with grooved edges for oil collection.
- Rectangular drain with a grease/food debris collection container.
- Detachable, stainless steel grease splash-guard.
- CE certified unit.

CONSTRUCTION

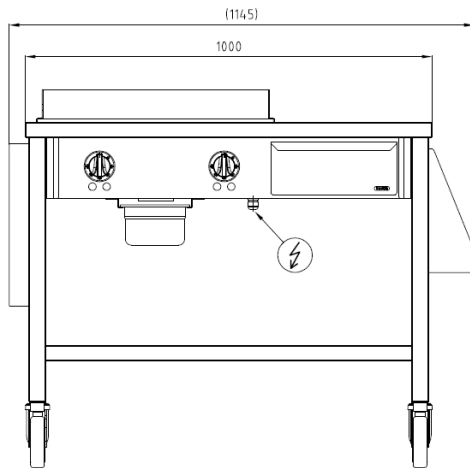
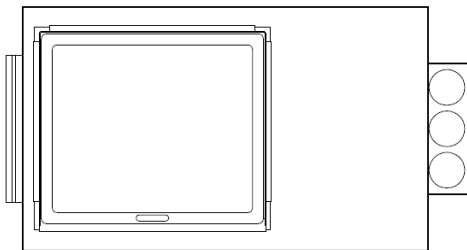
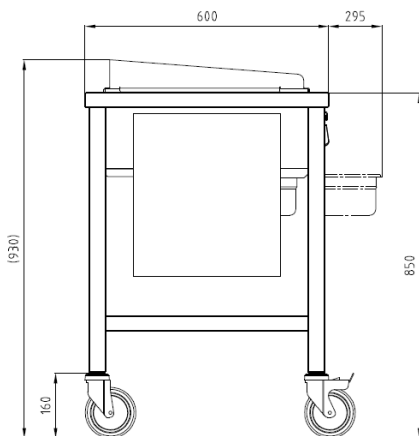
- Sturdy frame, stainless steel AISI 304.
- Top (1.5 mm), stainless steel AISI 304 with orbital pattern.
- Front, side and back panels (1.0 mm), stainless steel AISI 304 with hairline surface pattern.
- Types of installations: free standing,
- Frame, top and panels, all made of high-grade stainless steel.

INCLUDED ACCESSORIES

- Detachable, stainless steel grease splash-guard.
- Detachable bottles & knives holders.

OPTIONAL ACCESSORIES

- Power cable type: H07RN-F (3 x 2.5 mm²).

FRONT**TOP****SIDE**

*Overall dimension in mm

TECHNICAL DATA**External Dimensions**

Width	: 1000 mm
Depth	: 600 mm
Height	: 850 mm

Cooking Surface

Cooking zones	: 492 x 412 mm
Heating zones	: 2
Control type	: Modulating temperature control

Electrical Supply Data

Total connected load	: 3.3 kW
Voltage	: 230V, 1PNE AC / 50-60 Hz
Recommended fuse	: 20 A (slow)

Connections

Water	: N/A
Drain	: N/A

Heat & Steam Emissions

Direct heat emission	: 1.09 kW
Latent heat emission	: 1.32 kW
Steam emission	: 1.94 kg/h

PACKAGING DATA

Width	: 1030 mm
Depth	: 630 mm
Height	: 970 mm
Volume	: 0.63 m ³

WEIGHT

Net Weight	: 90 kg
Gross Weight	: 121 kg