

## Modular Cooking - Meritus

### Gas - Noodle Cooker

#### NGN 16 (ME)



Due to continuous technical development, the image shown may not represent the latest design of the unit.

#### DESCRIPTION

Modular gas noodle cooker with 750 mm depth and 16 kW tubular burner. Equipped with swing door.

Salt-resistant stainless steel tank with a volume of 27 liters and cold water supply with a faucet for tank filling, easy operable from the front panel. Designed for continuous and high-speed cooking of noodles, the NGN 16 is the perfect choice for any Asian restaurants.

Made of AISI 304 with 1.5 mm top thickness, temperature controlled, noodle tank is welded.

#### OTHER AVAILABLE MODELS

- NGN 16 AL (ME)

#### MAIN FEATURES

- Powered with 16 kW chrome-plated steel fin burner.
- Capacity up to 27 liters.
- Usable for six noodle baskets.
- Tank outer surface is coated with special black paint to improve its thermal efficiency.
- Manual water filling system with integrated knob on the front panel.
- Piezzo ignition system with rubber cover.
- Equipped with flame failure device.
- Thermal-cut off when overheated.

#### CONSTRUCTION

- External construction entirely with AISI 304.
- Top panel with 1.5 mm thickness. Orbital surface finishing: resistant toward scratches.
- Front panel is constructed of 0.8 mm AISI 304 with satin surface finish.
- Side panel is constructed of 0.8 mm AISI 304 with satin surface finish.
- Adjustable +/- 25 mm AISI leg.
- Nayati connection system between Meritus products on the front panels, cabinets, and splashbacks.
- Cabinet executed with H2 radius.
- Deep drawn front panel to minimize liquid penetration to the internal part.
- Gasket protection behind the knobs to prevent water to seeping in, prolonging main heating regulation parts.

#### INCLUDED ACCESSORIES

- G20 Conversion Kit
- Noodle basket (6 pcs.).
- Swing door.

#### OPTIONAL ACCESSORIES

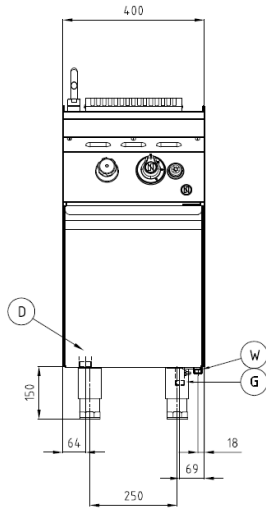
- Extra noodle baskets.
- Joint clip ME.

PT. NAYATI INDONESIA

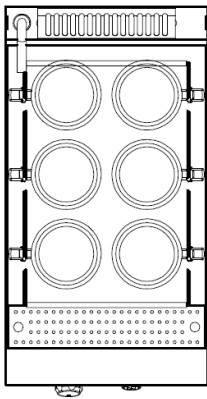
[www.nayati.com](http://www.nayati.com)

Nayati reserves the right to make product alterations and or price adjustments at any time and can not be held responsible for any printing errors or omissions.

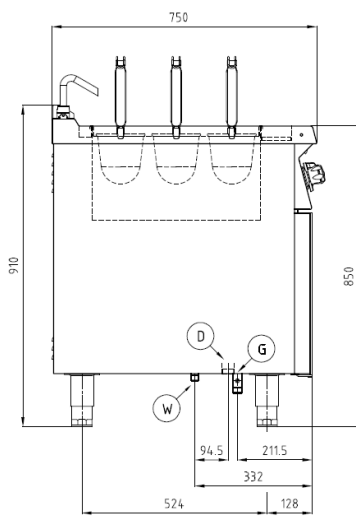
**FRONT**



**TOP**



**SIDE**



\*Overall dimension in mm

**TECHNICAL DATA**

External Dimensions

Width : 400 mm  
Depth : 750 mm  
Height : 850/900 mm

Cooking Surface

Cooking zones : 27 liters, 320 x 475 mm

Gas Power Rating

Heat input total : LPG/Natural Gas 16 kW  
No. of burners : 1  
Control type : High - low power control  
Gas type options : LPG G30, G31  
Natural Gas G20, G25

Connections

Gas : DN 20 (3/4")  
Water : DN 15 (1/2")  
Drain : DN 25 (1")

Heat & Steam Emissions

Direct heat emission : 3.12 kW  
Latent heat emission : 3.52 kW  
Steam emission : 5.17 kg/h

PACKAGING DATA

Width : 430 mm  
Depth : 780 mm  
Height : 1020 mm  
Volume : 0.34 m<sup>3</sup>

WEIGHT

Net Weight : 47 kg  
Gross Weight : 55 kg