

Oriental Cooking - Gas Steamer
Gas -Three Deck Steam Cabinet
NGSCD 9-90 LN



Due to continuous technical development, the image shown may not represent the latest design of the unit.

DESCRIPTION

Gas steam cabinet with three decks. Equipped with high-performance burners with a total of 33 kW power rate for quick steam.

Each steam chamber is individually controlled with three steaming operations to achieve the ideal balance between performance and energy-saving when needed.

Powerful, compact, and suitable for rice and any steamed food, the NGSCD steamer is the perfect choice for high-frequent Asian restaurants.

OTHER AVAILABLE MODELS

- NGSCD 9-90 CE

MAIN FEATURES

- High-performance atmospheric burners with a total power rate of 33 kW.
- Electric ignition.
- Equipped with pilot burners, safety thermocouples, gas valves, gas knee levers.
- Steam box engine with automatic filling system and security thermostat.
- Three, individually controlled steam chambers. Top & middle deck with 660/615/220 mm, bottom deck 660/615/400 mm (w/d/h) internal dimensions.

CONSTRUCTION

- Sturdy frame made of stainless steel AISI 430.
- Front and side panels made of stainless steel AISI 304 with hairline surface pattern (0.8 mm).
- Back panel made of stainless steel AISI 304 with hairline surface pattern (0.8 mm).
- Tubular, height adjustable (± 25 mm) stainless steel legs.
- Types of installations: free standing or placed on a plinth.
- Unit made of high-grade stainless steel.

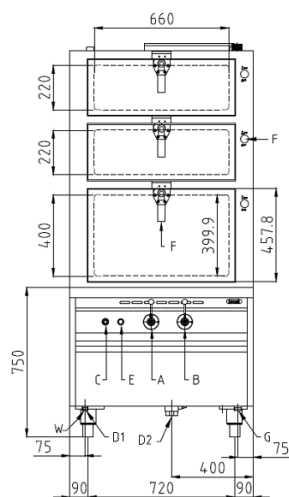
INCLUDED ACCESSORIES

- Stainless steel wire grills 600x650 mm (4 pcs).

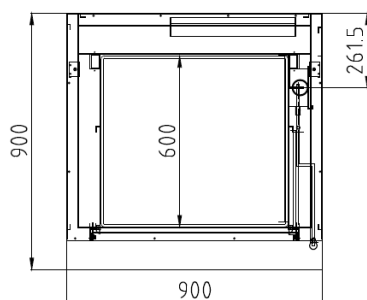
OPTIONAL ACCESSORIES

- N/A

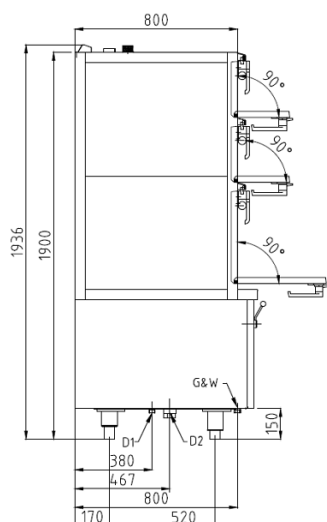
FRONT



TOP



SIDE



*Overall dimension in mm

TECHNICAL DATA

External Dimensions

Width	: 900 mm
Depth	: 900 mm
Height	: 1900/1936 mm

Cooking Surface

Cooking zones	: 660 x 615 (3pcs) mm
---------------	-----------------------

Gas Power Rating

Heat input total	: LPG/Natural Gas 33 kW, and 0.004 kW - 230V, 1NPE AC / 50-60 Hz
------------------	--

No. of burners

Control type	: High-low power control
--------------	--------------------------

Gas type options	: LPG G30 Natural Gas G20
------------------	------------------------------

Connections

Gas	: DN25 (1")
Water	: DN15 (1/2")
Drain	: DN32 (1 1/4") & DN40 (1 1/2")

Heat & Steam Emissions

Direct heat emission	: LPG/Natural Gas 4.95 kW
Latent heat emission	: LPG/Natural Gas 5.94 kW
Steam emission	: LPG/Natural Gas 8.75 kg/h

PACKAGING DATA

Width	: 930 mm
Depth	: 930 mm
Height	: 2056 mm
Volume	: 1.78 m ³

WEIGHT

Net Weight	: 243 kg
Gross Weight	: 300 kg

PT. NAYATI INDONESIA

www.nayati.com

Nayati reserves the right to make product alterations and or price adjustments at any time and can not be held responsible for any printing errors or omissions.

22/03/2022