

## Oriental Cooking - Roaster & Grill

### Gas - Yakitori / Skewer Grill

#### NYG 14-20 LS CE



Due to continuous technical development, the image shown may not represent the latest design of the unit.

#### DESCRIPTION

Table-top, compact lava stone gas grill with two high-performance burners of 14 kW power rate total.

Made of stainless steel with a two removable grills and a grease/grilling debris collection trays for ease of use and cleaning.

With the indirect grilling method, the NYG is perfect for preparing all kind of meat and vegetable skewers like Satay, Yakitori, Shaslik, Sish Kebab, Köfta etc.

#### OTHER AVAILABLE MODELS

- NYG 7-20 LS CE

#### MAIN FEATURES

- Two high-performance, atmospheric tubular burners with a power rate of 7 kW each.
- Heat diffuser for even heat distribution.
- Piezo ignition.
- Equipped with pilot burners, safety thermocouples, gas valves, gas knobs.
- Reinforced wire grill for lava stones.
- CE certified unit.

#### CONSTRUCTION

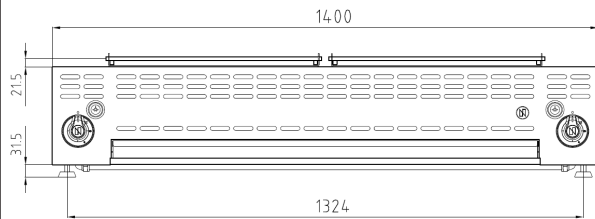
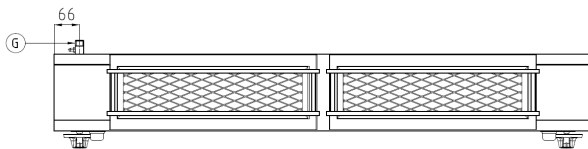
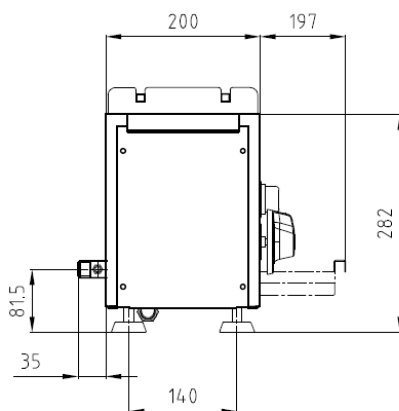
- Sturdy frame made of stainless steel AISI 430.
- Stainless steel top panel (1.0 mm), AISI 304 with hairline surface pattern.
- Front and side panels (1.0 mm) made of stainless steel AISI 304 with hairline surface pattern.
- Back panel (1.0 mm) made of stainless steel AISI 304 with hairline surface pattern.
- Height adjustable levelling legs.
- Types of installations: table-top.
- Frame, top and panels, all made of high-grade stainless steel.

#### INCLUDED ACCESSORIES

- Lava stones.

#### OPTIONAL ACCESSORIES

- Stainless steel BBQ grill adapter.

**FRONT****TOP****SIDE**

\*Overall dimension in mm

**TECHNICAL DATA****External Dimensions**

Width	: 1400 mm
Depth	: 200 mm
Height	: 282 mm

**Cooking Surface**

Cooking zones	: 500 x 136 (2 pcs) mm
---------------	------------------------

**Gas Power Rating**

Heat input total	: LPG/LNG 14 kW
No. of burners	: 2
Control type	: High-low power control
Gas type options	: LPG G30, G31 LNG G20, G25

**Connections**

Gas	: DN15 (1/2")
Water	: N/A
Drain	: N/A

**Heat & Steam Emissions**

Direct heat emission	: LPG/LNG 4.9 kW
Latent heat emission	: LPG/LNG 5.6 kW
Steam emission	: LPG/LNG 8.24 kh/h

**PACKAGING DATA**

Width	: 1430 mm
Depth	: 230 mm
Height	: 402 mm
Volume	: 0.13 m <sup>3</sup>

**WEIGHT**

Net Weight	: 46 kg
Gross Weight	: 65 kg