

Smart Oven - Deck Oven

Gas - Deck Oven

NGDO 100-SR



Due to continuous technical development, the image shown may not represent the latest design of the unit.

DESCRIPTION

Gas Deck Oven with the chamber size of 92 cm by 80 cm. Powered with two gas burners with total power rate of 14 kW. Includes steam device for superb baking results.

Usable for two bakery trays of 400 x 600 mm.

Operated through touch screen control with Multistep program. Includes on/off temperature management for better accuracy. Maximum working temperature of 300 degree Celcius.

OTHER AVAILABLE MODELS

- NGDO 1-S
- NGDO 130-S

MAIN FEATURES

- Heated with maximum temperature of 300 degree Celcius.
- Capacity of two bakery trays of 400 x 600 mm.
- Lower opening oven door with stainless steel cylindrical handle bar.
- Framed door with glass window to observe baking results.
- Controlled through touch screen interface with multistep program.
- Temperature adjustment with on/off temperature control system for greater accuracy.
- Includes halogen lighting in the baking chamber.
- Equipped with adjustable feet.

CONSTRUCTION

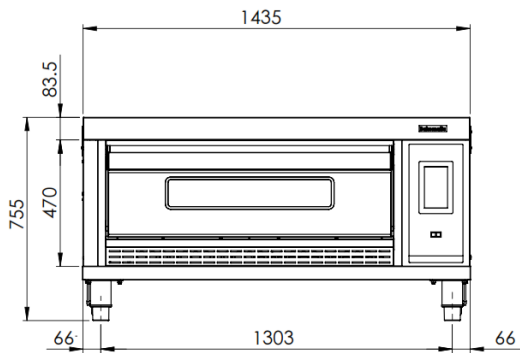
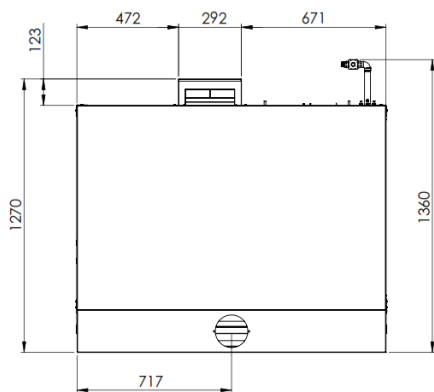
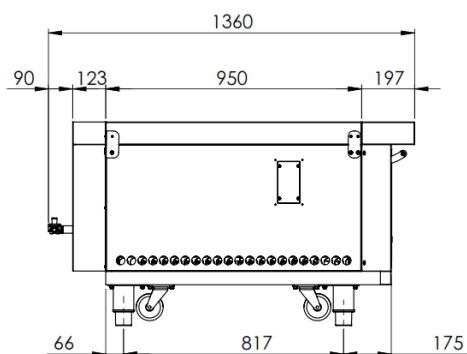
- Exterior panel constructed from stainless steel 304.
- Tempered glass door made of double layer to insulate heat inside the chamber.
- Round bar stainless steel door handle.

INCLUDED ACCESSORIES

- Power cable.
- Pan hook.
- Baking chamber grill.

OPTIONAL ACCESSORIES

- Stand NDSO 4T, with capacity of 12 bakery trays of 60 cm by 40 cm.
- Steam Device

FRONT**TOP****SIDE**

*Overall dimension in mm

TECHNICAL DATA**External Dimensions**

Width	: 1435 mm
Depth	: 1360 mm
Height	: 736/755 mm

Cooking Surface

Cooking zones	: 922 x 805 x 225 mm
---------------	----------------------

Gas Power Rating

Heat input total	: LPG/LNG 14 kW
No. of burners	: 2
Control type	: Temperature control
Gas type options	: LPG G30, G31 LNG G20, G25

Electrical Supply Data

Total connected load	: 0.1 kW
Voltage	: 230V, 1NPE AC / 50-60 Hz
Recommended fuse	: 0.5 A (slow)

Connections

Gas	: DN 20 (3/4")
Water	: N/A
Drain	: N/A

Heat & Steam Emissions

Direct heat emission	: 4.9 kW
Latent heat emission	: 2.8 kW
Steam emission	: 4.1 kg/h

PACKAGING DATA

Width	: 1513 mm
Depth	: 1438 mm
Height	: 993 mm
Volume	: 2.16 m ³

WEIGHT

Net Weight	: 223 kg
Gross Weight	: 314 kg