

Oriental Cooking - Wok Range

Gas - Wok Kwalie

NGK 7-90



Due to continuous technical development, the image shown may not represent the latest design of the unit.

DESCRIPTION

Single gas wok with a high-performance, low-pressure jet-burner and a power rate of 33 kW. Compact, powerful and suitable for various methods of Oriental cooking, the NGK low-pressure wok is the perfect choice for any kitchen.

Made of stainless steel with a slanted, deep drawn, 3.2 mm strong, reinforced top panel with a heavy-duty removable cast iron wok ring. Coldwater supply with one swivel faucet, mounted on the back splash, easily operable from the front panel.

The intelligent deck cooling & cleaning system with spray nozzles guarantee an efficient cooling of the top panel and an enhanced hygienic as food debris are flushed away towards the drain. The built-in strainer avoids congestions of the drain.

OTHER AVAILABLE MODELS

- NGK 15-90
- NGK 22-90

MAIN FEATURES

- One atmospheric, low-pressure jet-burner with a power rate of 33 kW.
- Manual ignition.
- Equipped with pilot burner, safety thermocouple, gas valve, gas knee lever.
- Slanted, deep drawn, reinforced top panel with drain channel and removable strainer in the front for easy operation.
- Cold-water supply with one swivel faucet mounted on the back splash.
- Deck cooling & cleaning system with spray nozzles for maximum hygiene.
- Suitable for wok-pan sizes Ø 14-18" (355-457 mm).

CONSTRUCTION

- Sturdy frame made of stainless steel AISI 430.
- Slanted, reinforced deep drawn stainless steel top panel (3.2 mm), AISI 304 with hairline surface pattern.
- Front and side panels made of stainless steel AISI 430 with hairline surface pattern (0.8 mm).
- Back splash made of stainless steel AISI 304 with hairline surface pattern (1.2 mm).
- Tubular, height adjustable (± 25 mm) stainless steel legs.
- Type of installation: free standing.
- Frame, top and panels, all made of high-grade stainless steel.

INCLUDED ACCESSORIES

- Wok stand (1 pc)

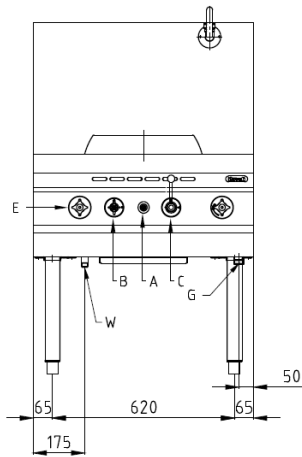
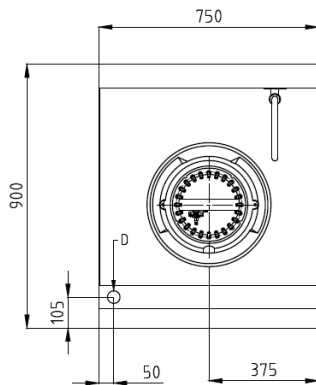
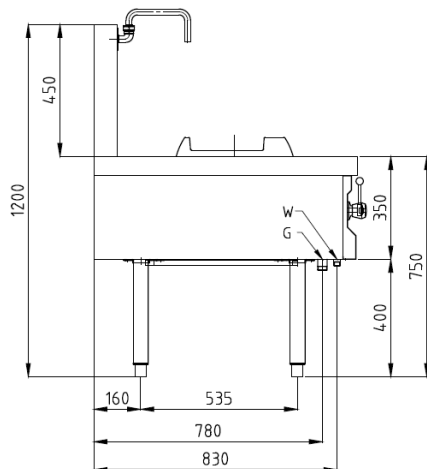
OPTIONAL ACCESSORIES

- Ladle / basket holder
- Condiment tray made of stainless steel AISI 304 (300x300 mm).

PT. NAYATI INDONESIA

www.nayati.com

Nayati reserves the right to make product alterations and or price adjustments at any time and can not be held responsible for any printing errors or omissions.

FRONT**TOP****SIDE**

*Overall dimension in mm

TECHNICAL DATA**External Dimensions**

Width : 750 mm
 Depth : 900 mm
 Height : 750/1200 mm

Cooking Surface

Wok burners : Ø 330 mm
 Soup burners : N/A

Gas Power Rating

Heat input total : LPG/LNG 33 kW
 No. of burners : 1
 Control type : Open-close valve
 Gas type options: LPG G30
 LNG G20

Connections

Gas : DN25 (1")
 Water : DN15 (1/2")
 Drain : DN32 (1 1/4")

Heat & Steam Emissions

Direct heat emission : LPG/LNG 8.25 kW
 Latent heat emission : LPG/LNG 4.95 kW
 Steam emission : LPG 8.75 kg/h

PACKAGING DATA

Width : 780 mm
 Depth : 930 mm
 Height : 1320 mm
 Volume : 0.96 m³

WEIGHT

Net Weight : 74 kg
 Gross Weight : 94 kg

PT. NAYATI INDONESIAwww.nayati.com

Nayati reserves the right to make product alterations and or price adjustments at any time and can not be held responsible for any printing errors or omissions.

30/09/2020