

Oriental Cooking - Wok Range

Gas - Wok Kwalie

NGK 22-90



Due to continuous technical development, the image shown may not represent the latest design of the unit.

DESCRIPTION

Gas wok with three high-performance, low-pressure jet-burners, each with a power rate of 33 kW. Compact, powerful and suitable for various methods of Oriental cooking, the NGK low-pressure wok is the perfect choice for any kitchen.

Made of stainless steel with a slanted, 3.2 mm strong, reinforced top panel with heavy-duty removable cast iron wok rings. Coldwater supply with two swivel faucets mounted on the back-splash, easily operable from the front panel.

The intelligent deck cooling & cleaning system with spray nozzles guarantee an efficient cooling of the top panel and an enhanced hygienic as food debris are flushed away towards the drain. The built-in strainer avoids congestions of the drain.

OTHER AVAILABLE MODELS

- NGK 7-90
- NGK 15-90

MAIN FEATURES

- Three atmospheric, low-pressure jet-burners with a power rate of 33 kW each.
- Manual ignition.
- Equipped with pilot burners, safety thermocouples, gas valves, gas knee levers.
- Slanted, reinforced top panel with drain channel and removable strainer in the front for easy operation.
- Cold-water supply with two swivel faucets mounted on the backsplash.
- Deck cooling & cleaning system with spray nozzles for maximum hygiene.
- Suitable for wok-pan sizes Ø 14-18" (355-457 mm).

CONSTRUCTION

- Sturdy frame made of stainless steel AISI 430.
- Slanted, reinforced stainless steel top panel (3.2 mm), AISI 304 with hairline surface pattern.
- Front and side panels made of stainless steel AISI 430 with hairline surface pattern (0.8 mm).
- Backsplash made of stainless steel AISI 304 with hairline surface pattern (1.2 mm).
- Tubular, height adjustable (± 25 mm) stainless steel legs.
- Type of installation: free standing.
- Frame, top and panels, all made of high-grade stainless steel.

INCLUDED ACCESSORIES

- Wok stand (3 pcs)

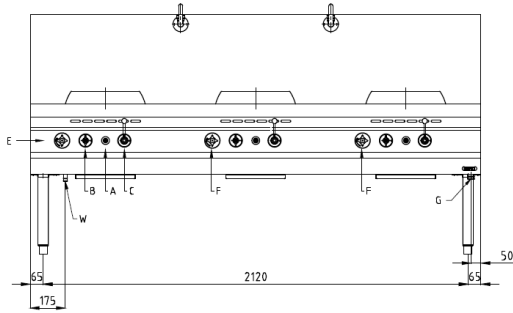
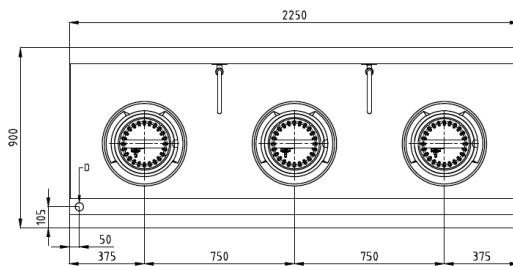
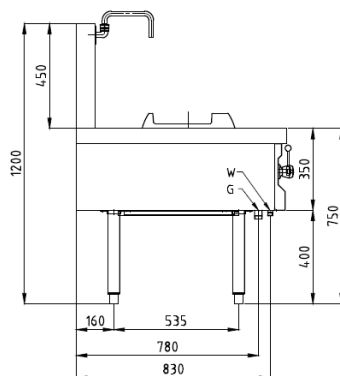
OPTIONAL ACCESSORIES

- Ladle / basket holder
- Condiment tray made of stainless steel AISI 304 (300x300 mm).

PT. NAYATI INDONESIA

www.nayati.com

Nayati reserves the right to make product alterations and or price adjustments at any time and can not be held responsible for any printing errors or omissions.

FRONT**TOP****SIDE**

*Overall dimension in mm

TECHNICAL DATA**External Dimensions**

Width	: 2250 mm
Depth	: 900 mm
Height	: 750/1200 mm

Cooking Surface

Wok burners	: 3 x Ø 330 mm
Soup burners	: N/A

Gas Power Rating

Heat input total	: LPG/LNG 99 kW
No. of burners	: 3
Control type	: Open-close valve
Gas type options	: LPG G30 LNG G20

Connections

Gas	: DN25 (1")
Water	: DN15 (1/2")
Drain	: DN32 (1 1/4")

Heat & Steam Emissions

Direct heat emission	: LPG/LNG 24.75 kW
Latent heat emission	: LPG/LNG 14.85 kW
Steam emission	: LPG 26.25 kg/h

PACKAGING DATA

Width	: 2280 mm
Depth	: 930 mm
Height	: 1320 mm
Volume	: 2.80 m ³

WEIGHT

Net Weight	: 194 kg
Gross Weight	: 281 kg