

Oriental Cooking - Wok Range
Gas - Wok Kwalie High Pressure
NGKH 6-75



Due to continuous technical development, the image shown may not represent the latest design of the unit.

DESCRIPTION

Single gas wok with a powerful, high-pressure burner and a power rate of 35 kW. Compact, efficient and suitable for various methods of Oriental cooking, the NGKH high-pressure wok is the perfect choice for any kitchen.

Made of stainless steel with a slanted, deep drawn 3.2 mm strong, reinforced top panel with a heavy-duty removable cast iron wok ring. Cold-water supply with one swivel faucet, mounted on the backsplash, easily operable from the front panel.

The intelligent deck cooling & cleaning system with spray nozzles guarantee an efficient cooling of the top panel and an enhanced hygienic as food debris are flushed away towards the drain channel in the front. The built-in strainer avoids congestions of the drain.

OTHER AVAILABLE MODELS

- NGKH 12-75

MAIN FEATURES

- One atmospheric, high-pressure burner with a power rate of 35 kW.
- Manual ignition.
- Equipped with pilot burner, safety thermocouple, gas valve, gas knee lever.
- Slanted, deep drawn, reinforced (3.2 mm) top panel with drain channel and removable strainer in the front for easy operation.
- Cold-water supply with one swivel faucet mounted on the backsplash.
- Deck cooling & cleaning system with spray nozzles for maximum hygiene.
- Suitable for wok-pan sizes Ø 14-18" (355-457 mm).

CONSTRUCTION

- Sturdy frame made of stainless steel AISI 430.
- Slanted, reinforced deep drawn stainless steel top panel (3.2 mm), AISI 304 with hairline surface pattern.
- Front and side panels made of stainless steel AISI 430 with hairline surface pattern (0.8 mm).
- Backsplash made of stainless steel AISI 304 with hairline surface pattern (1.2 mm).
- Tubular, height adjustable (± 25 mm) stainless steel legs.
- Type of installation: free standing.
- Frame, top and panels, all made of high-grade stainless steel.

INCLUDED ACCESSORIES

- Wok stand (1 pc)

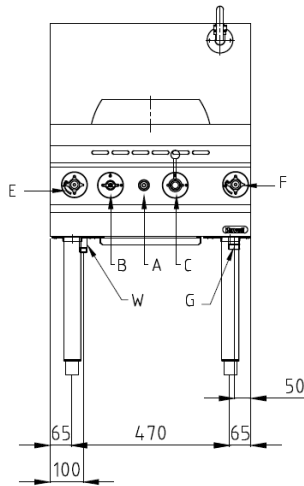
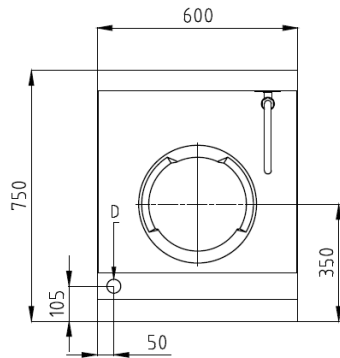
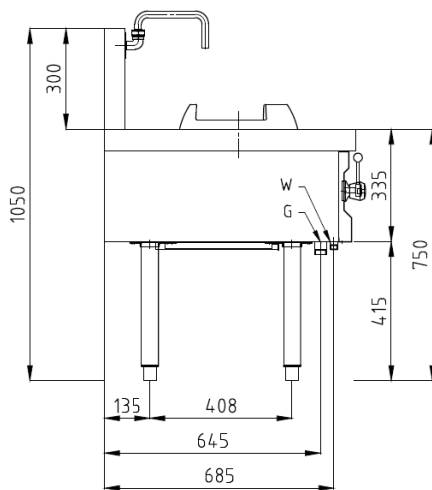
OPTIONAL ACCESSORIES

- Ladle / basket holder
- Condiment tray made of stainless steel AISI 304 (300x300 mm).

PT. NAYATI INDONESIA

www.nayati.com

Nayati reserves the right to make product alterations and or price adjustments at any time and can not be held responsible for any printing errors or omissions.

FRONT**TOP****SIDE**

*Overall dimension in mm

TECHNICAL DATA**External Dimensions**

Width	: 600 mm
Depth	: 750 mm
Height	: 750/1050 mm

Cooking Surface

Wok burners	: Ø 280 mm
Soup burners	: N/A

Gas Power Rating

Heat input total	: LPG 35 kW
No. of burners	: 1
Control type	: Open-close valve
Gas type options	: LPG 0.5...1.0 bar LNG N/A

Connections

Gas	: DN25 (1")
Water	: DN15 (1/2")
Drain	: DN32 (1 1/4")

Heat & Steam Emissions

Direct heat emission	: LPG 8.75 kW
Latent heat emission	: LPG 5.25 kW
Steam emission	: LPG 9.28 kg/h

PACKAGING DATA

Width	: 630 mm
Depth	: 780 mm
Height	: 1170 mm
Volume	: 0.57 m ³

WEIGHT

Net Weight	: 59 kg
Gross Weight	: 77 kg