

Smart Oven - Convection Oven

Electric - Convection Oven

NDSC 4-D



Due to continuous technical development, the image shown may not represent the latest design of the unit.

DESCRIPTION

Stand for NBE 4T2.

Made entirely of stainless steel 304 with square tubes and fully welded to minimize dirt accumulation.

Cabinet design with cover on the rear and on the side. Equipped with adjustable legs and castor for flexibility and mobility.

OTHER AVAILABLE MODELS

- N/A

MAIN FEATURES

Designed to store 8 bakery tray (4 tray x 2 columns) under NBE 4T2.

CONSTRUCTION

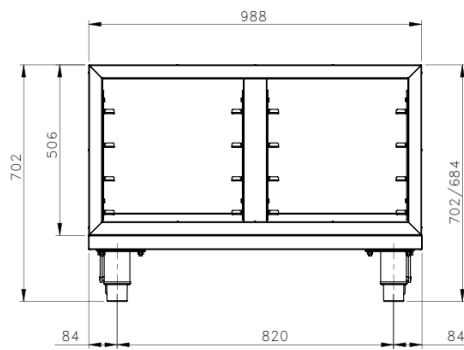
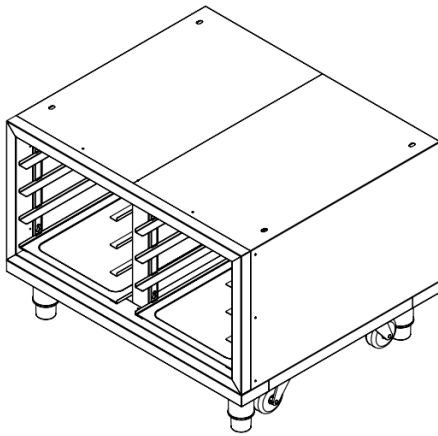
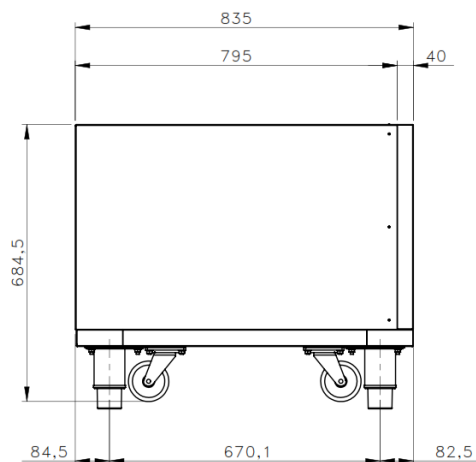
- Exterior panel constructed from stainless steel 304.

INCLUDED ACCESSORIES

- N/A.

OPTIONAL ACCESSORIES

- N/A

FRONT**TOP****SIDE**

*Overall dimension in mm

TECHNICAL DATA**External Dimensions**

Width	: 988 mm
Depth	: 835 mm
Height	: 702/684 mm

PACKAGING DATA

Width	: 1030 mm
Depth	: 875 mm
Height	: 965 mm
Volume	: 0.87 m ³

WEIGHT

Net Weight	: 82 kg
Gross Weight	: 94.5 kg