

Modular Cooking - Grandis

Neutral Counter

NNWC 8-90 GR D



Due to continuous technical development, the image shown may not represent the latest design of the unit.

DESCRIPTION

Modular neutral working counter with 900 mm depth, 7200 square-centimeter working area. Equipped with swing door.

Usable for preparation phase before/after cooking processes and storage of crockery and tools.

Made of AISI 304 with 2 mm top thickness.

OTHER AVAILABLE MODELS

- NNWC 4-90 GR
- NNWC 6-90 GR
- NNWC 8-90 GR
- NNWC 4-90 GR DR
- NNWC 6-90 GR DR
- NNWC 8-90 GR DR
- NNWC 4-90 GR D
- NNWC 6-90 GR D
- NNWC 4-90 GR D DR
- NNWC 6-90 GR D DR
- NNWC 8-90 GR D DR

MAIN FEATURES

- Neutral working counter with 800 x 900 mm surface.
- Cabinet equipped with swing door.

CONSTRUCTION

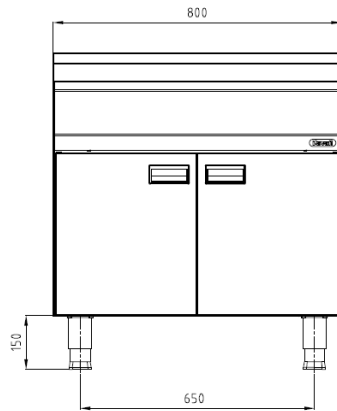
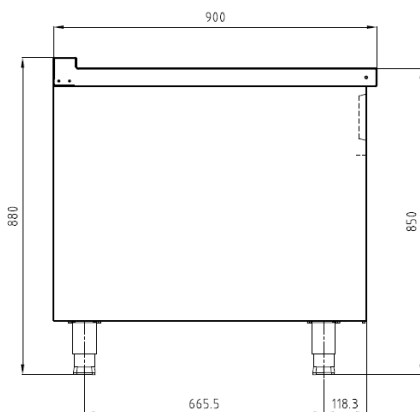
- External construction entirely with AISI 304.
- Top panel with 2 mm thickness. Orbital surface finishing: resistant toward scratches.
- Front panel is constructed of 1 mm AISI 304 with satin surface finish.
- Side panel is constructed of 0.8 mm AISI 304 with satin surface finish.
- Adjustable +/- 25 mm AISI leg.
- Cabinet executed with H2 radius.
- Connector between Grandis product on the front and the back.
- IPX4 water protection level.

INCLUDED ACCESSORIES

- N/A

OPTIONAL ACCESSORIES

- Joint clip GR.

FRONT**TOP****SIDE**

*Overall dimension in mm

TECHNICAL DATA**External Dimensions**

| | |
|--------|--------------|
| Width | : 800 mm |
| Depth | : 900 mm |
| Height | : 850/880 mm |

PACKAGING DATA

| | |
|--------|-----------------------|
| Width | : 830 mm |
| Depth | : 930 mm |
| Height | : 1000 mm |
| Volume | : 0.77 m ³ |

WEIGHT

| | |
|--------------|---------|
| Net Weight | : 66 kg |
| Gross Weight | : 88 kg |

PT. NAYATI INDONESIAwww.nayati.com

Nayati reserves the right to make product alterations and or price adjustments at any time and can not be held responsible for any printing errors or omissions.

15/05/2020