

Refrigeration - Undercounter

Undercounter Chiller

NBL 1C 600



Due to continuous technical development, the image shown may not represent the latest design of the unit.

DESCRIPTION

Undercounter chiller with 600 mm depth with splashback and 1 door.

Operating temperature from 2 to 12 degree Celcius. Suitable for areas with limited space.

Made entirely of AISI 304, internally and externally. User interface with digital control with black/white contrast for ease of monitoring. Non-CFC and HCFC polyurethane insulation with density of 40 kg per cubic meter. Powered with refrigerant type of R404a.

OTHER AVAILABLE MODELS

- NBL 3C 600
- NBLA 2C 600
- NBLA 3C 600
- NRT 1C 750
- NRT 2C 750
- NRT 3C 750
- NRTA 1C 750
- NRTA 2C 750
- NRTA 3C 750
- NST 2C 750 N9 (6X1/6) GN
- NSTA 2C 750 N9 (6X1/6) GN

MAIN FEATURES

- Undercounter chiller with 600 mm depth with splashback and 2 doors. Operating temperature from 2 to 12 degree Celcius. Suitable for areas with limited space.
- Internal volume of 125 liters with size of 460 x 480 x 570 mm.
- User interface with electronic control. Designed with black/white contract for ease of monitoring.
- Designed to perform under tropical with ambient condition of 38 degree Celcius
- Ducted cooling design, ensuring uniform temperature distribution among compartments.
- Cassette type refrigeration system designed for simple service and maintenance. Universal size for both chiller and freezer systems.
- Removable racking system.
- Includes lock and master key for all compartments.
- Self-closing doors with removable magnetic balloon gasket.
- Includes protection component against voltage drops.
- Fan-assisted defrost system.

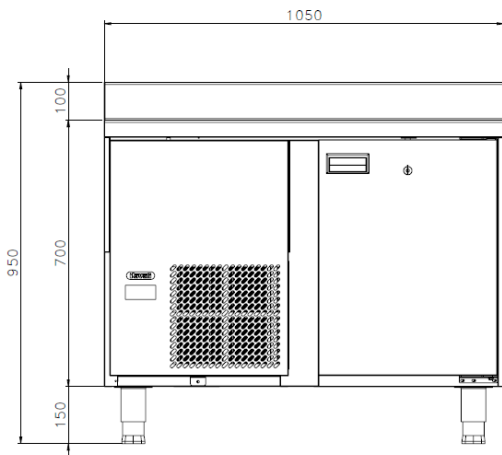
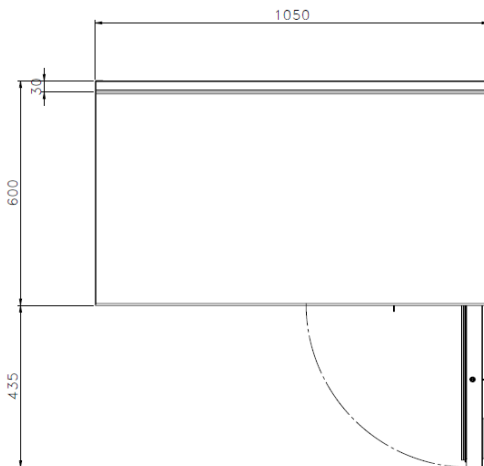
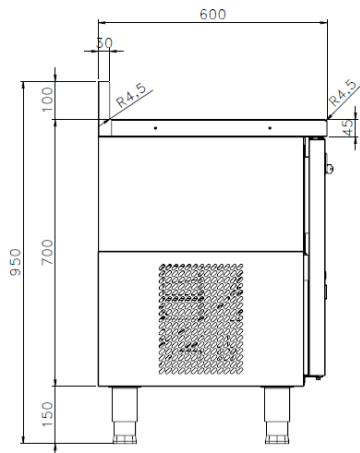
CONSTRUCTION

- External construction entirely with AISI 304. Including back panel.
- Internal construction entirely with AISI 304 with 2B surface finish.
- Top and front panel with AISI 304 with 1.0 mm thickness. Top profile is 45 mm height. Satin surface finishing.
- Side panel with AISI 304 with 0.5 mm thickness. Satin surface finishing.
- Door thickness of 42 mm.
- Internal chamber bottom is designed with radius for hygiene.
- Adjustable +/- 25 mm AISI leg. Can be dismantled and ready for concrete plinth installation.
- Condensor circulation with filter of 300 x 280 mm.
- Splashback model is equipped with 100 x 30 mm splashback.
- Body height is 700 mm without work top.

PT. NAYATI INDONESIA

www.nayati.com

Nayati reserves the right to make product alterations and or price adjustments at any time and can not be held responsible for any printing errors or omissions.

FRONT**TOP****SIDE**

*Overall dimension in mm

TECHNICAL DATA**External Dimensions**

Width : 1050 mm
 Depth : 600 mm
 Height : 850 mm

Internal Dimensions

Width : 456 mm
 Depth : 480 mm
 Height : 570 mm
 Volume : 250 liters

Refrigeration Properties

Refrigerant : R404a
 Temperature : 2 C ... 5 C
 Control type : Temperature control & configuration

Electrical Supply Data

Energy consumption : 6.8 kW / 24 hours
 Connected Load : 433 W
 Refrigeration Output :
 450 W -10 degree C Evap. temperature

Voltage : 230V, 1NPE AC / 50 Hz
 Recommended fuse : 10 A (slow)
 Starting current : 12 A
 Running current : 2.14 A

Heat Emissions

Direct heat emission : 0.19 kW

PACKAGING DATA

Width : 1080 mm
 Depth : 630 mm
 Height : 970 mm
 Volume : 0.95 m³

WEIGHT

Net Weight : 82 kg
 Gross Weight : 110 kg

INCLUDED ACCESSORIES

- Stainless steel racks 400 x 325 x 80 mm.
- Power cable, H07RN-F (3x 2.5 mm).
- Condensor filter 300 x 280 mm.
- Door locks kit.

OPTIONAL ACCESSORIES

- Extra stainless steel racks 400 x 325 x 80 mm.

PT. NAYATI INDONESIAwww.nayati.com

Nayati reserves the right to make product alterations and or price adjustments at any time and can not be held responsible for any printing errors or omissions.

04/09/2021