

## Smart Oven - Convection Oven

### Electric - Convection Oven

#### NBE 4T2



Due to continuous technical development, the image shown may not represent the latest design of the unit.

#### DESCRIPTION

Electric Bakery Convection Oven with heating rate of 10.8 kW.

Baking capacity up to four bakery tray with size of 400 x 600 mm.

Powered with intelligent 7" touch screen interface that controls time, temperature, fan speed, open/close system and steam injection.

#### OTHER AVAILABLE MODELS

- NBE 443
- NBE 8T1

#### MAIN FEATURES

- Heated with maximum temperature of 250 degree Celcius.
- Capacity of 4 bakery trays of 400 x 600 mm.
- IPX3 splash water protection.
- Fully integrated glass door design.
- Equipped with steam capabilities.
- Includes halogen lighting in the baking chamber.
- Manual steam injection system.
- Convection fan with reversible direction, switches automatically every two minutes.
- Baking capacity tested for 64 pieces of 30-gram croissants per cycle.
- Baking capacity tested for 48 pieces of 35 gram-danish raisin per cycle.

#### CONSTRUCTION

Exterior panel constructed from stainless steel 304.

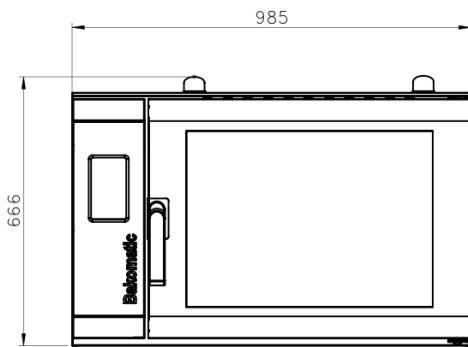
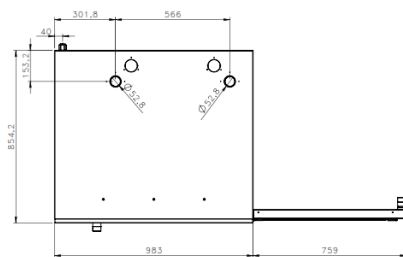
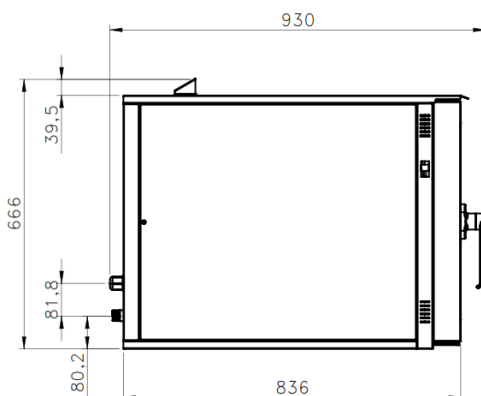
- Tempered glass door made of double layer to insulate heat inside the chamber.

#### INCLUDED ACCESSORIES

- Bakery tray runners.

#### OPTIONAL ACCESSORIES

- N/A

**FRONT****TOP****SIDE**

\*Overall dimension in mm

**TECHNICAL DATA****External Dimensions**

Width	: 983 mm
Depth	: 930 mm
Height	: 666 mm

**Cooking Surface**

Cooking zones	: Four bakery trays of 400 x 600 mm.
Heating zones	: 1
Control type	: Smart touch screen programmable time, temperature, open/close system, fan speed and steam injection.

**Electrical Supply Data**

Total connected load	: 10.8 kW
Voltage	: 400V, 3NPE AC /50-60Hz
Recommended fuse	: 20 A (slow)

**Connections**

Water	: DN 20 (3/4")
Drain	: N/A

**Heat & Steam Emissions**

Direct heat emission	: 3.86 kW
Latent heat emission	: 1.73 kW
Steam emission	: 2.47 kg/h

**PACKAGING DATA**

Width	: 1058 mm
Depth	: 991 mm
Height	: 826 mm
Volume	: 0.87 m <sup>3</sup>

**WEIGHT**

Net Weight	: 121 kg
Gross Weight	: 150 kg