

## Modular Cooking - Meritus

### Gas - Fryer

#### GFE 40 (ME)



Due to continuous technical development, the image shown may not represent the latest design of the unit.

#### DESCRIPTION

Modular gas fryer with 750 mm depth and single tank with oil capacity of 23 liters, powered with 21 kW AISI tubular burner. Equipped with swing door.

Usable for deep frying.

Made of AISI 304 with 1.5 mm top thickness, manually ignited, includes dedicated cold zone to prolong usable oil lifetime and better fried products. Includes fryer basket, tank cover, crumb filter and oil drain kit.

#### OTHER AVAILABLE MODELS

- NGF 14 2T (ME)

#### MAIN FEATURES

- Powered with 21 kW stainless-steel burners.
- Oil capacity of 23 liters
- Frying basket, tank cover, oil drain kit, and crumb filter included.
- Fully welded fryer tank.
- Drain valve with 1" on the front surface provided
- Thermal-cut off when overheated.

#### CONSTRUCTION

- External construction entirely with AISI 304.
- Top panel with 1.5 mm thickness. Orbital surface finishing: resistant toward scratches.
- Front panel is constructed of 0.8 mm AISI 304 with satin surface finish.
- Side panel is constructed of 0.8 mm AISI 304 with satin surface finish.
- Adjustable +/- 25 mm AISI leg.
- Nayati connection system between Meritus products on the front panels, cabinets, and splashbacks.
- Cabinet executed with H2 radius.
- Deep drawn front panel to minimize liquid penetration to the internal part.
- Gasket protection behind the knobs to prevent water to seeping in, prolonging main heating regulation parts.

#### INCLUDED ACCESSORIES

- G20 Conversion Kit
- Fryer basket(2 pcs.).
- Crumb filter.
- Oil drain pipe and container.
- Fryer tank lid.

#### OPTIONAL ACCESSORIES

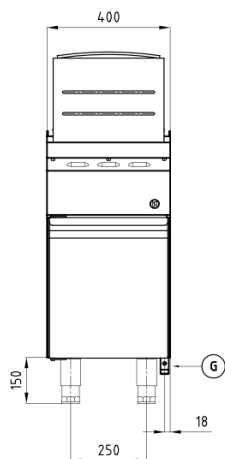
- Joint clip ME.

PT. NAYATI INDONESIA

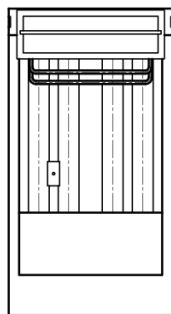
[www.nayati.com](http://www.nayati.com)

Nayati reserves the right to make product alterations and or price adjustments at any time and can not be held responsible for any printing errors or omissions.

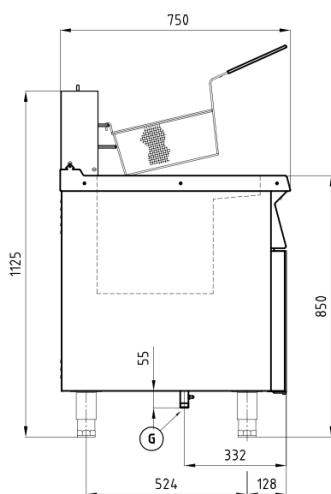
## FRONT



## TOP



## SIDE



\*Overall dimension in mm

## TECHNICAL DATA

### External Dimensions

|        |               |
|--------|---------------|
| Width  | : 400 mm      |
| Depth  | : 750 mm      |
| Height | : 850/1125 mm |

### Cooking Surface

|               |                           |
|---------------|---------------------------|
| Cooking zones | : 23 liters, 337 x 340 mm |
|---------------|---------------------------|

### Gas Power Rating

|                  |   |
|------------------|---|
| Heat input total | : LPG/Natural Gas 21 kW                       |
| No. of burners   | : 3   |
| Control type     | : Modulating temperature control              |
| Gas type options | : LPG G30, G31<br>Natural Gas G20, G25, G25.3 |

### Connections

|       |                |
|-------|----------------|
| Gas   | : DN 20 (3/4") |
| Water | : N/A          |
| Drain | : DN 25 (1")   |

### Heat & Steam Emissions

|                      |              |
|----------------------|--------------|
| Direct heat emission | : 1.82 kW    |
| Latent heat emission | : 14.24 kW   |
| Steam emission       | : 20.95 kg/h |

### PACKAGING DATA

|        |                       |
|--------|-----------------------|
| Width  | : 430 mm              |
| Depth  | : 780 mm              |
| Height | : 1245 mm             |
| Volume | : 0.42 m <sup>3</sup> |

### WEIGHT

|              |         |
|--------------|---------|
| Net Weight   | : 75 kg |
| Gross Weight | : 80 kg |

PT. NAYATI INDONESIA

[www.nayati.com](http://www.nayati.com)

Nayati reserves the right to make product alterations and or price adjustments at any time and can not be held responsible for any printing errors or omissions.

26/10/2021