

Smart Oven - Deck Oven

Gas - Deck Oven

NGDO 100-DR



Due to continuous technical development, the image shown may not represent the latest design of the unit.

DESCRIPTION

Gas Double Deck Oven with the chamber size of 92 cm by 80 cm. Powered with two gas burners with total power rate of 14 kW in each deck. Possible steam functionality with optional steam device for superb baking results.

Usable for four bakery trays of 400 x 600 mm.

Operated through touch screen control with Multistep program. Includes on/off temperature management for better accuracy. Maximum working temperature of 300 degree Celcius.

OTHER AVAILABLE MODELS

- NGDO 1-S
- NGDO 130-S
- NGDO 100-SR
- NGDO 100-TR

MAIN FEATURES

- Heated with maximum temperature of 300 degree Celcius.
- Capacity of four bakery trays of 400 x 600 mm.
- Lower opening oven door with stainless steel cylindrical handle bar.
- Framed door with glass window to observe baking results.
- Controlled through touch screen interface with multistep program.
- Temperature adjustment with on/off temperature control system for greater accuracy.
- Includes halogen lighting in the baking chamber.
- Equipped with adjustable feet.
- Baking capacity tested for 64 pieces of 30-gram croissants per cycle.
- Baking capacity tested for 48 pieces of 35 gram-danish raisin per cycle.

CONSTRUCTION

- Exterior panel constructed from stainless steel 304.
- Tempered glass door made of double layer to insulate heat inside the chamber.
- Round bar stainless steel door handle.

INCLUDED ACCESSORIES

- Pan hook.
- Baking chamber grill.

OPTIONAL ACCESSORIES

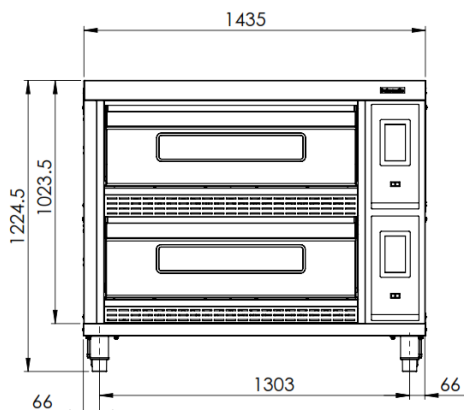
- Stand NDSO 4T, with capacity of 12 bakery trays of 60 cm by 40 cm.
- Steam Device

PT. NAYATI INDONESIA

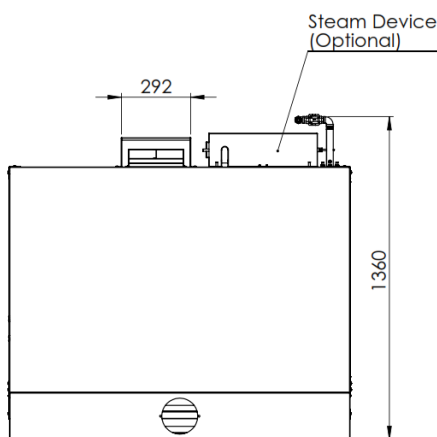
www.nayati.com

Nayati reserves the right to make product alterations and or price adjustments at any time and can not be held responsible for any printing errors or omissions.

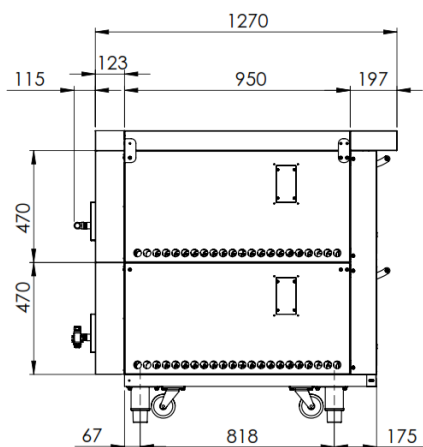
FRONT



TOP



SIDE



*Overall dimension in mm

TECHNICAL DATA

External Dimensions

Width : 1435 mm
Depth : 1360 mm
Height : 1207/1225 mm

Cooking Surface

Cooking zones : 2 x 922 x 805 x 225 mm

Gas Power Rating

Heat input total : LPG/LNG 28 kW
No. of burners : 4
Control type : Temperature and Timer control
Gas type options: LPG G30, G31
Natural Gas G20, G25

Electrical Supply Data

Total connected load : 0.2 kW
Voltage : 230V, 1NPE AC / 50-60 Hz
Recommended fuse : 0.5 A (slow)

Connections

Gas : DN 20 (3/4")
Water : N/A
Drain : N/A

Heat & Steam Emissions

Direct heat emission : 9.8 kW
Latent heat emission : 5.6 kW
Steam emission : 8.2 kg/h

PACKAGING DATA

Width : 1513 mm
Depth : 1438 mm
Height : 1345 mm
Volume : 2.93 m³

WEIGHT

Net Weight : 384 kg
Gross Weight : 487.5 kg

PT. NAYATI INDONESIA

www.nayati.com

Nayati reserves the right to make product alterations and or price adjustments at any time and can not be held responsible for any printing errors or omissions.

04/08/2022